

"ACTUAL PROBLEMS OF POST-TRAUMATIC, VASCULAR AND
NEURODEGENERATIVE DISEASES OF THE NERVOUS AND
CARDIOVASCULAR SYSTEMS".

http://www.cimb.me/files/programm-conference_november-1-2_Kyiv_1-2022.pdf

3 NOVEMBER 2 PM NEW YORK

*SOME CASE REPORTS ON PANIC ATTACKS
AND PTSD TREATED WITH CHAKRA/NADI THERAPY*

VINCENZO VALENZI DIRETTORE DIPARTIMENTO DI MEDICINA INTEGRATA E BIOFISICA UNIFEDER DI FI -IT

DEEP N SINGH MD MASTER OF NADI WATER THERAPY DELHI INDIA

MADAN THANGAVELU PHD MOLECULAR GENOMICS CAMBRIDGE UK

AN OVERVIEW OF RESEARCH IN PSYCHOSOMATICS PHARMACOELECTRODYNAMICS AND QUANTUM CHEMISTRY

- Mario Tiengo and John Eccles on quantum physics in the neurophysiology of pain
http://www.siaecm.org/dolore/17_03_10_M_TIENGO_Dolore_Percezione_del_.htm
- The Valenzi Preparata Widom Debate on Bioelectrical system SEP and cQED
<http://www.22passi.it/downloads/biorisonanza/qeddefinitivo.pdf>
- The Chinese Meridian as a Simple BioCircuit Model with Ohm's Law with Weak Interactions and Bohm-Arhanov, Josephson effects on SEP
<http://ibb.kpi.ua/article/view/140255>
- A wireless system of Chakra in Mind Brain Body interaction in Widom theory
<https://onlinelibrary.wiley.com/doi/abs/10.1002/qua.22140>
- From drug intolerances to SEP Driven therapy, the debate Valenzi Montagnier
<https://www.youtube.com/watch?v=CuQtvjBuavl>
- Some case reports on FED treatment of pain <http://www.cimb.me/casi-clinici.html>.
- Remembering the work of Physiologist Vadym Berevzosky <http://www.iiimb.me/files/07-cembreum.pdf>

IMPALPABLE, INVISIBLE AND LETHAL. IT IS THE STRESS,
OR RATHER THE EXCESSES OF WHAT IS BASICALLY

A NATURAL REACTION THAT ALLOWS US TO COPE WITH
DANGER AND MANAGE NOVELTIES.

Stress can affect the immune system in two ways:

- 1) triggering chronic inflammation that damages tissues
- 2) suppressing immune system cells needed to fight infection.



BRUCE MC EWEN OF ROCKEFELLER UNIVERSITY WROTE:

- «Our body is made to allow us to react to things that happen to us and changes in the environment, then quickly recovering its balance»,
- As if to say that the body reacts to external aggressions, for example by releasing substances that help us respond to stresses, increasing blood pressure and heartbeat, or strengthening the immune system to accelerate the healing of any wounds

CHRONIC STRESS

- «The problem – McEwen specifies – occurs when this physiological mechanism enters a condition of overload, due to excess stress, or to the inability to reduce tension once the emergency has been overcome.»

PSYCHOSOMATICS OF STRESS

- It is at this point that a state of frustration or perennial anxiety is generated, which can be translated into biological terms in a constant increase in the chemical mediators themselves, which end up wearing down the organism. And there are more and more studies that confirm the link between excess stress and different pathologies, from trivial infections to allergies, autoimmune diseases and cancer.

THE SUFFERING HEART

- As for the heart, more and more studies confirm what ancient wisdom called "heartbreak", in other words the effects of our moods on the heart muscle.
- Research shows that depression sufferers have a two to four times higher risk of heart attack – or other acute cardiac event – than those in a good mood.
- And cardiovascular risk factors are also serious phobias, panic disorder and generalized anxiety, and even emotions such as anger and resentment.

THE ENIGMA OF BRAIN MIND CONSCIOUSNESS BODY AND THE KEY OF THE CHAKRAS IN MODERN SCIENCE.

- The main researches in brain-mind consciousness interaction were developed by the School of Sigmund Freud when they “discovered” (which means, they theorized) the unconscious. Neurophysiologic researches using electrophysiology of the EEG, Evoked Potential, Magnetic Resonance etc. have not proven capable fully of clearing the abounding enigmas of the unconscious. The great struggle to clear the dark matter of mind and consciousness were carried forth by Sir John Eccles, Mario Tiengo, and others.

Tiengo M. Talking with Sir John, interview with John Eccles on the theory of psychons. In: Seminars on pain. Mattioli Editore, Fidenza, 1992: 2:31-36.

Eccles' proposal of the theory of psychons,(17) according to which psychons interact with the neurons of the cortex through fields of quantum probability modulating their synaptic exocytosis, was not pursued. However, as specified by Tiengo, it is of crucial importance because it is the first attempt at providing a quantum interpretation of the mental modulation of pain perception.

If the paradigms of classical Newtonian physics can be applied to nociception, pain, as well as all the scientific research on mind, consciousness and self, requires a different interpretation: the key is quantum physics.

Tiengo writes: "The perception of pain can therefore be explored more deeply with the elusive world of quanta, conclusively recognising the failure of any attempt to reconcile clinical evidence and experimental data with common sense."(18

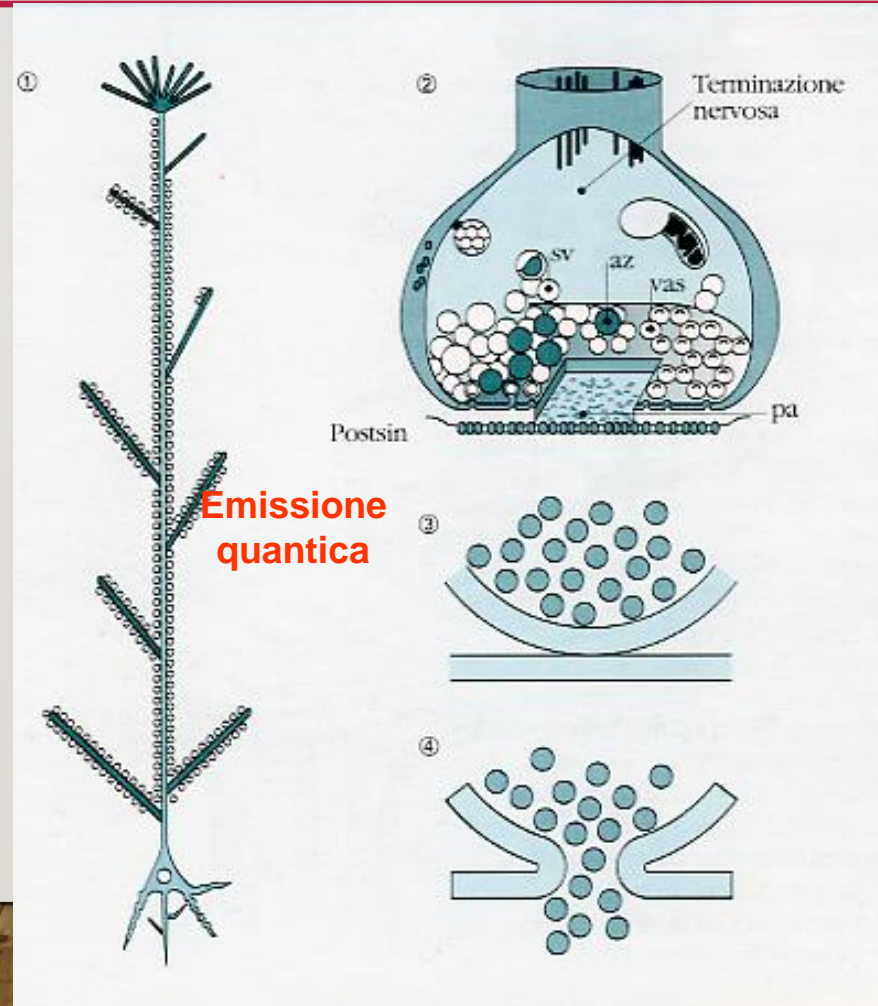


VACUUM AND COHERENCE IN NATURE

WEBNAR, 25 JULY 2007

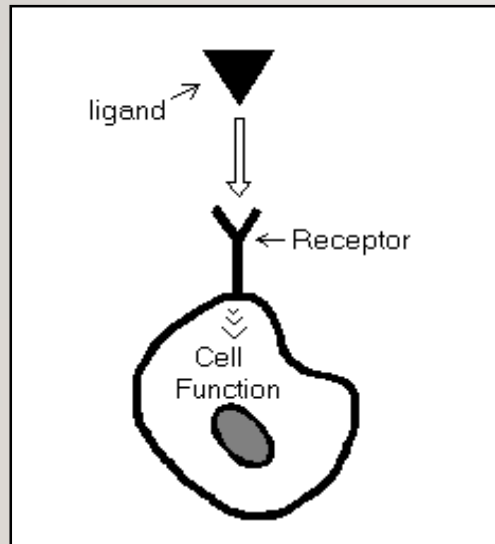


THE PSYCONE COORDINATES EXOCITOSES BY MEANS OF QUANTUM PROBABILITY FIELDS SIR JOHN ECCLES



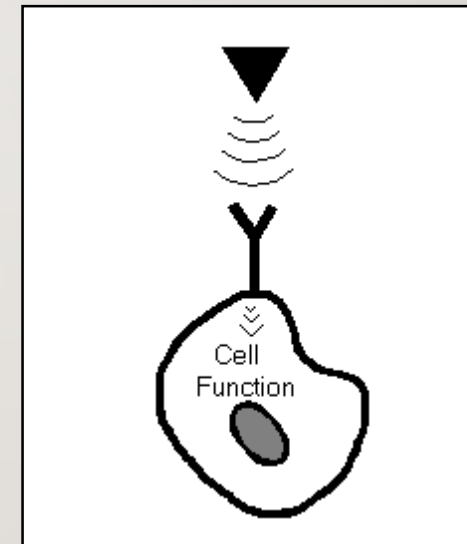
Molecular signaling

The Current Theory: "structural matching"



The 3D structure of ligand matches that of the receptor. Physical proximity induces receptor conformational changes which in turn triggers the cascade of events prompting cell function:

The Benveniste Theory: "electromagnetic signals"



Proximity favors resonance of ligand-receptor specific EM signals. Resonance serves as an iperconductive mechanism for activation changes which occur at all steps of the cascade inducing cell function.

RESONANCE PEAK IN THE CURRENT THROUGH THE SOLUTION (ZHADIN EFFECT)

ZHADIN M.N., NOVIKOV V.V., BARNESF.S. PERGOLA N.F. (1998) *COMBINED ACTION OF STATIC AND ALTERNATING MAGNETIC FIELDS ON IONIC CURRENT IN AQUEOUS GLUTAMIC ACID SOLUTIONS.*

BIOELECTROMAGNETICS 19: 41-45.

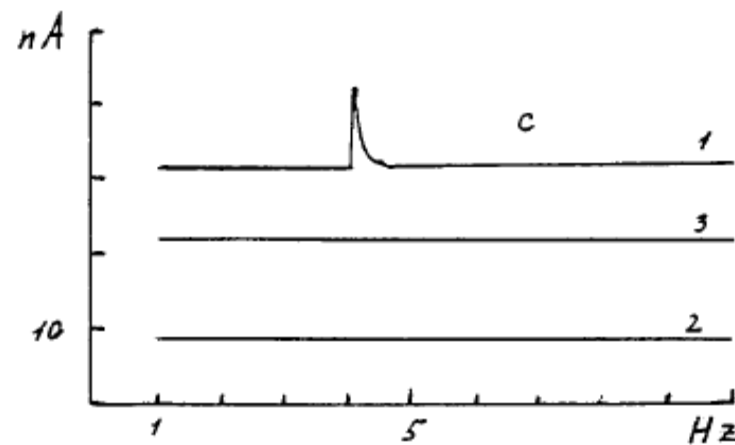


Fig. 2. Ionic current through aqueous glutamic acid (Glu) solution as a function of alternating magnetic field frequency at different values of static magnetic field. The alternating magnetic field frequency in Hz is plotted on the horizontal axis; the ionic current in nA is plotted on the vertical axis. The alternating field amplitude is $0.025 \mu\text{T}$; a: static magnetic field $B_0 = 20 \mu\text{T}$; b: $B_0 = 30 \mu\text{T}$; c: $B_0 = 40 \mu\text{T}$; 1: Glu solution with $\text{pH} = 2.85$; 2: Glu solution with $\text{pH} = 3.2$; 3: water with $\text{pH} 2.85$.

THEORY OF PSYCHONS OF ECCLES COULD BE RELATED TO CHAKRA AND SUBTIL BODY OF INDIA ?

In the Far East, (in China and India especially), several practical approaches to BMC were developed; and acupuncture and the Chakra system prove very useful today to guide the scientist in the labyrinth of unconscious and psycho-somatic interactions [see <https://mail.google.com/mail/u/1/>].

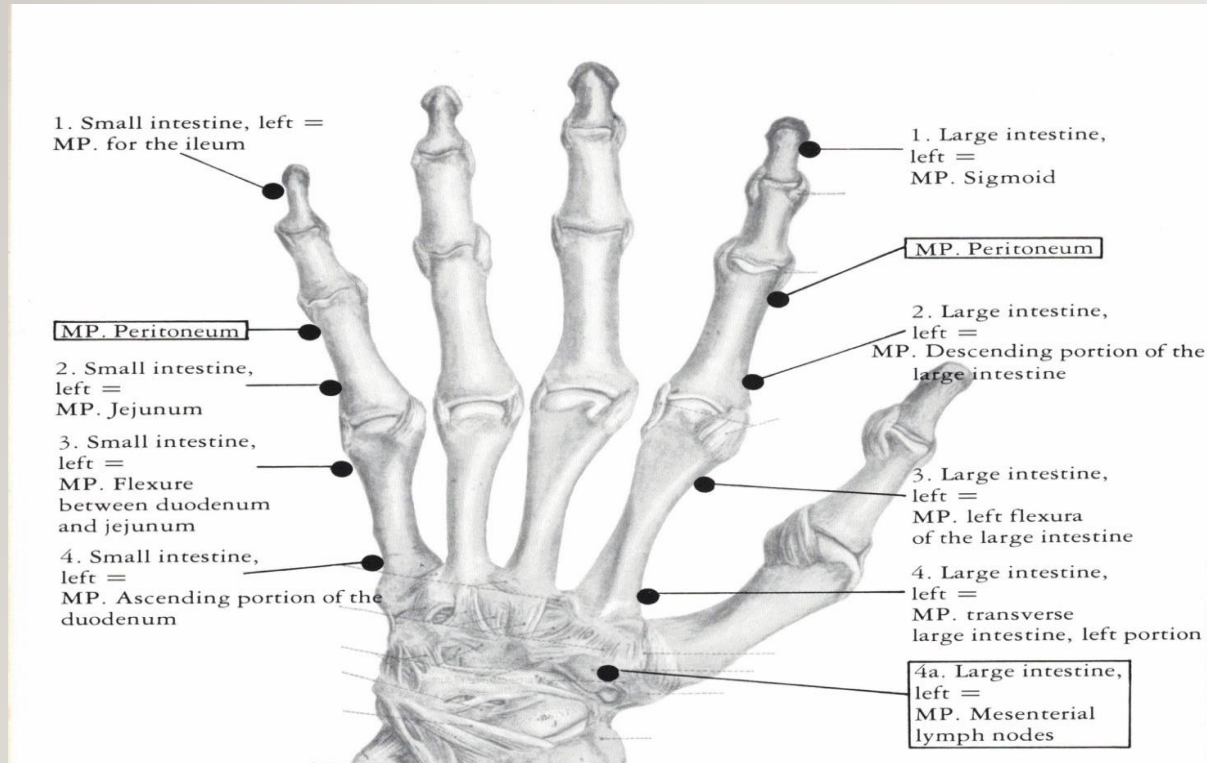
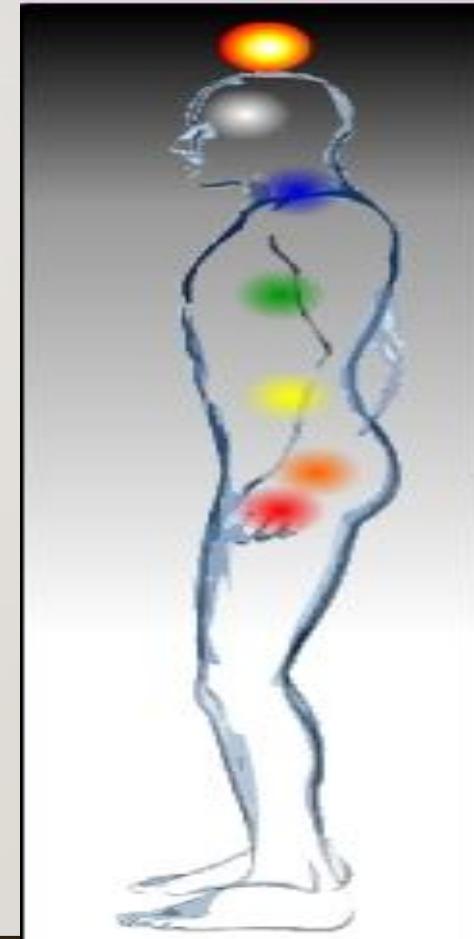


Fig. 10a. MP. for the left duodenum, left small intestine, left large intestine on the (left) hand

The MP. Peritoneum of the colon, left side, comprises furthermore:
mesocolon transversum, left portion, mesocolon descendens, and mesocolon sigmoideum
recessus paracolici as niches of the left peritoneum at the colon descendens
omentum majus, left portion
ligamentum gastrocolicum, left portion
ligamentum phrenicocolicum as a peritoneal fold between diaphragm and descending colon.



THE BIOPHYSICS OF MIND BRAIN BODY CONNECTION

The main contributions in this direction came from the physicist David Bohm on the hidden function; also, other strong contributions are coming today from the researches of Brian Josephson Nobel Price for super conductivity [for more information on the subject, see this link - www.britannica.com/biography/Brian-Josephson]. These biophysics models are progressing in developing bio-technology applications by means of the production of an innovative bio-tech device which measures the bio-electrical status of meridians and, in the latest developments of these machines, of chakras and their functional connection, well known in the practices of Old Hindu and Chinese Medicine, entirely connected with physio-pathology and human health status. All this aims to fully monitor every dysfunction through all levels of complexity of the HRV system.



Helper Personal M

91 Chakro-
terapiya



MY MEETING ON THE BRIDGE BETWEEN WEST AND EAST



In 1995, in Rome, I met my master Dr Umberto Grieco MD. He introduced me to the important perspectives of human health and wellbeing offered in the ancient and traditional Oriental School of medicine and how to use this in my practise and my activities on the theoretical foundations of human health and disease. Grieco's work and thinking then seemed very far from daily modern medicine, but he used it very powerfully to manage a number of chronic diseases and acute conditions. Dr Grieco had realized a very fascinating and important integration between modern medical school and ancient medical traditions. Dr Umberto used in his work the Orgonic Biotensor, a mechanical sensor to monitor the level of homeostasis.



LIFE FORCE, BIOENERGY, PRANA E ORGON ESOTERYC DREAMS O REALITY OF NATURE?

I was working then on the Free Energy of the atmosphere as developed by Dr Wilhelm Reich with his dispositive to accumulate and for therapy

<https://www.gruppomacro.com/prodotti/wilhelm-reich-epub> .

My effort till then was to clarify the connections between Prana and Orgone and how to use modern science to find a bridge with some of the great developments introduced in Europe on nadi-chakra (from Indian systems) and meridians (from China) for monitoring the subtle body. Over a long period following these early studies, and together with some leading scientist in the world, we have since developed some important experimental and theoretical considerations reviewed in 2018 in **"Some Observations on the Role of Water States for Biological and Therapeutical Effects"** <http://ibb.kpi.ua/article/view/140255>. This work cleared many aspects of 'order and disorder' in Life and life processes.



COHERENT QUANTUM ELECTRODYNAMICS APPLIED TO LIFE AND IPER-CONDUCTIVE PHENOMENA IN MERIDIANS/NADI ON LIFE SYSTEMS

- Several of these suggestions are consistent with Coherent Quantum Electrodynamics and could explain many enigmatic phenomena, where weak and super-weak signals are able to induce iperconductive phenomena in the electric circuitry in the body, some of these perhaps connected to meridians-chakra-nadi systems. These suggestions are elaborated and reviewed in the work of Widom, Srivastava and Valenzi **The biophysical basis of Benveniste experiments: Entropy, structure, and information in water** <https://onlinelibrary.wiley.com/doi/abs/10.1002/qua.22140>

NEURONS AS A TRANSCEIVER QUANTUM ELECTROMAGNETIC ANTENNA?

<https://www.consciocentric.com/articles/the-brain-is-a-transceiver>

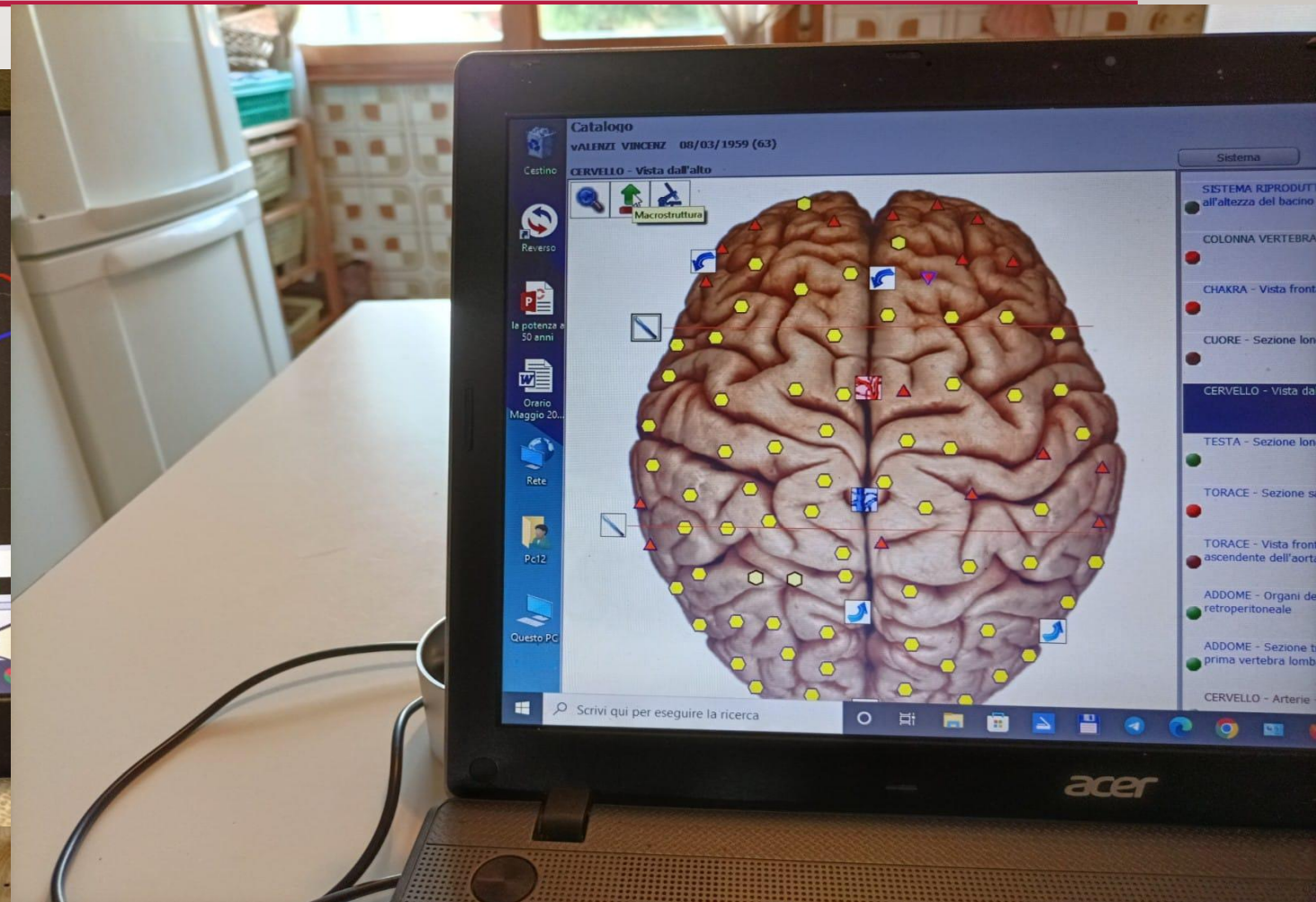
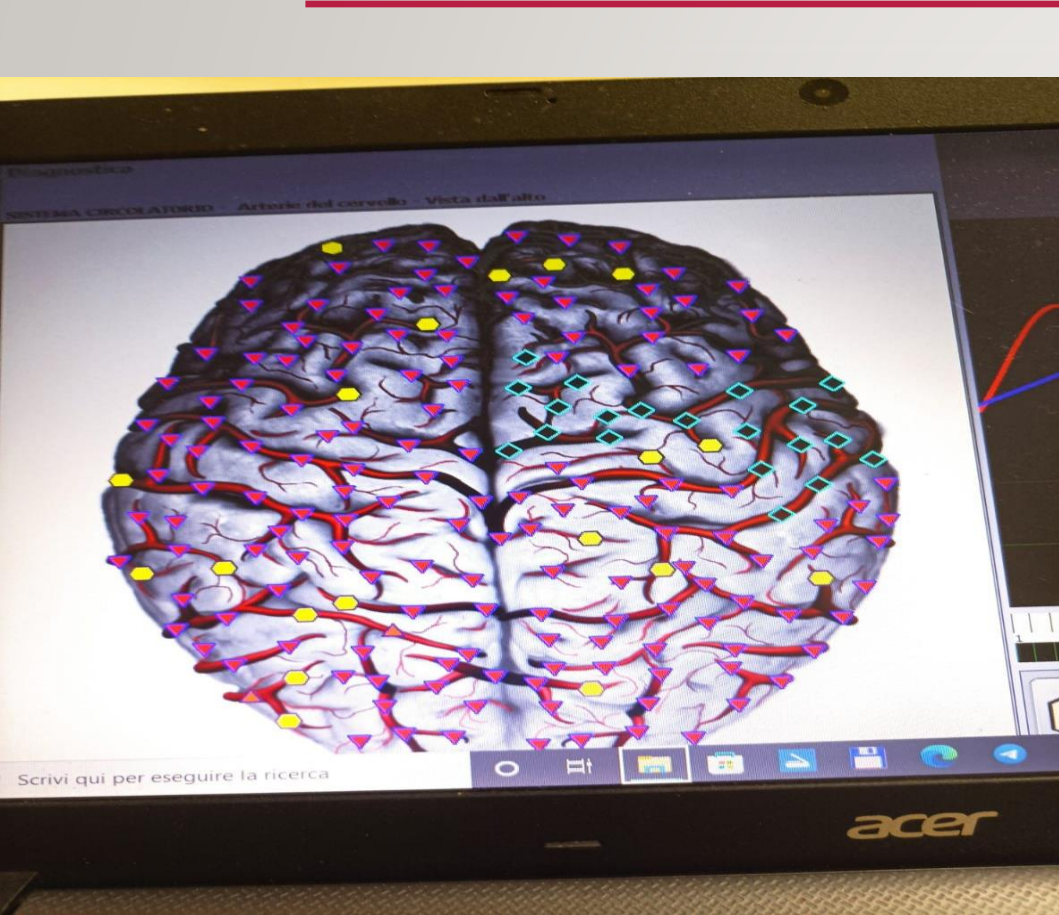
<https://www.scienzaeconoscenza.it/blog/consapevolezza/neuroni-come-bioantenne>

- Some recent developments in the broad areas of biological technologies in the last years appear also to support the more enigmatic/esoteric area of the connections between BODY, BRAIN, MIND and CONSCIOUSNESS. They point to the biological basis and maybe also the physical basis of such phenomena. I was informed about by such possibilities and also learnt these skills from my master Dr Grieco. It is now a great pleasure to be introduced to another master, Dr Deep, who is also able to treat complex disorder of subtle body Nadi and Chakra. The CHAKRA NADI SYSTEM as shown in the work of Dr Deep might be further refined into high levels of skill and efficiency in the treatment of BRAIN MIND CONSCIOUSNESS disorder that induce insomnia, psychosomatic diseases panic attack and PTSD. Such approaches hold great potential for the future.

A VERY PERSONAL CASE REPORT

- Personally, over the last months I was in a very stressed period of my life, with insomnia and general “incoherence” in brain and body, without any efficient therapy in modern medicine for myself. Dr Deep’s treatment based on India’s Chakra-Nadi understanding has helped me a lot also if pressure of daily stress continues to produce disorder in my performance and health status, monitored with electroquantistic biotechnologies that measure the state of bioelectrical homeostasis in the organs on the meridians and Chakras up to the cellular states. It seems that in the etiopathogeneisis of the psychosomatic disorder there may be Borelliosis with Lyme disease and the pharmacoelectrodynamic therapy with tetracyclines has clearly improved the clinical status performance status with correlated instrumental improvement.

COLOR SCALE OF HOMEOSTASIS AND/OR ENTROPY IN THE BRAIN



NANO-ELEMENTS FROM PATHOGENIC MICROORGANISMS

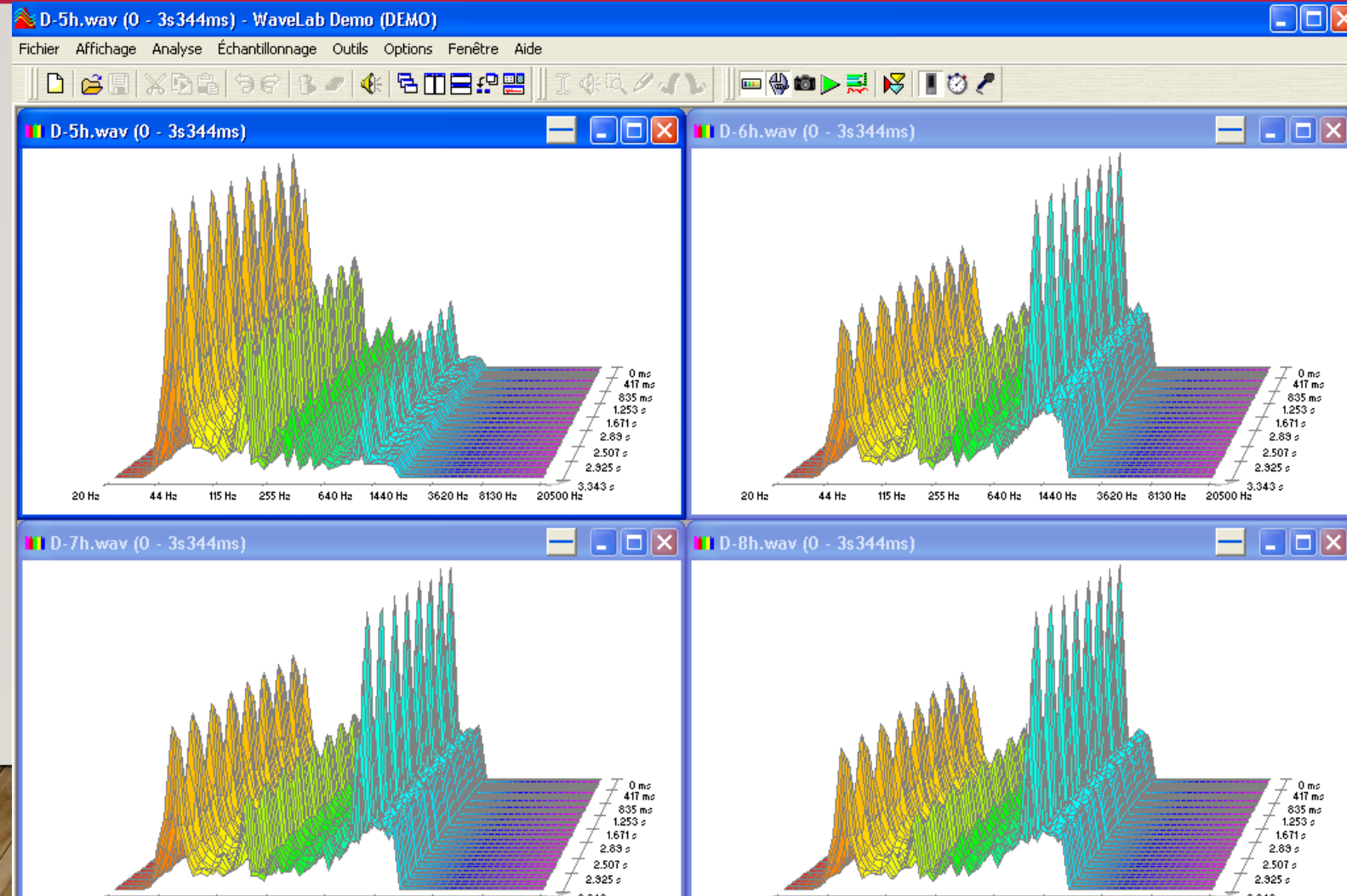
*BY PROFESSOR LUC MONTAGNIER, M.D.**

- There are many ways by which infectious agents can persist in their host, despite an adequate immune response of the latter and the medical use of strong inhibitors of their replication. Retroviruses have evolved to find the best solution in order to persist silent in the host cell by integrating their DNA into the cell DNA. But bacteria have also learned how to stay almost indefinitely in tissues or organs in a resting state, insensitive to antibiotics and poorly exposed to immune reactions. It is also a general property of pathogenic microorganisms to adapt their genome very rapidly to any targeted reaction against them, either endogenous (immune response) or exogenous (treatment). I will describe some new phenomena occurring in bacteria and viruses which may contribute to the chronicity of many diseases and to the difficulties of eradicating their infectious origin.
- The first is what can be best defined as genetic dispersion. When a mycoplasma suspension is filtered through filters of 100 and 20 nM, which are pore sizes much lower than the average size of these micro-organisms (300 nM), the filtrate is apparently sterile when it is cultured in synthetic medium or analysed by DNA PCR and nested DNA PCR. However when the filtrate is incubated with human T lymphocytes (previously checked for lack of infection by the mycoplasma), we detect again the resurgence of the mycoplasma with all its characteristics after 2 or 3 weeks of culture, even when the filtrate is diluted down to 10⁻⁶.
- *President of the World Foundation for AIDS Research and Prevention, 1, rue Miollis - 75732 Paris Cedex 15 Tel. : +33 (0)1 45 68 45 45 - Fax : +33 (0)1 42 73 37 45

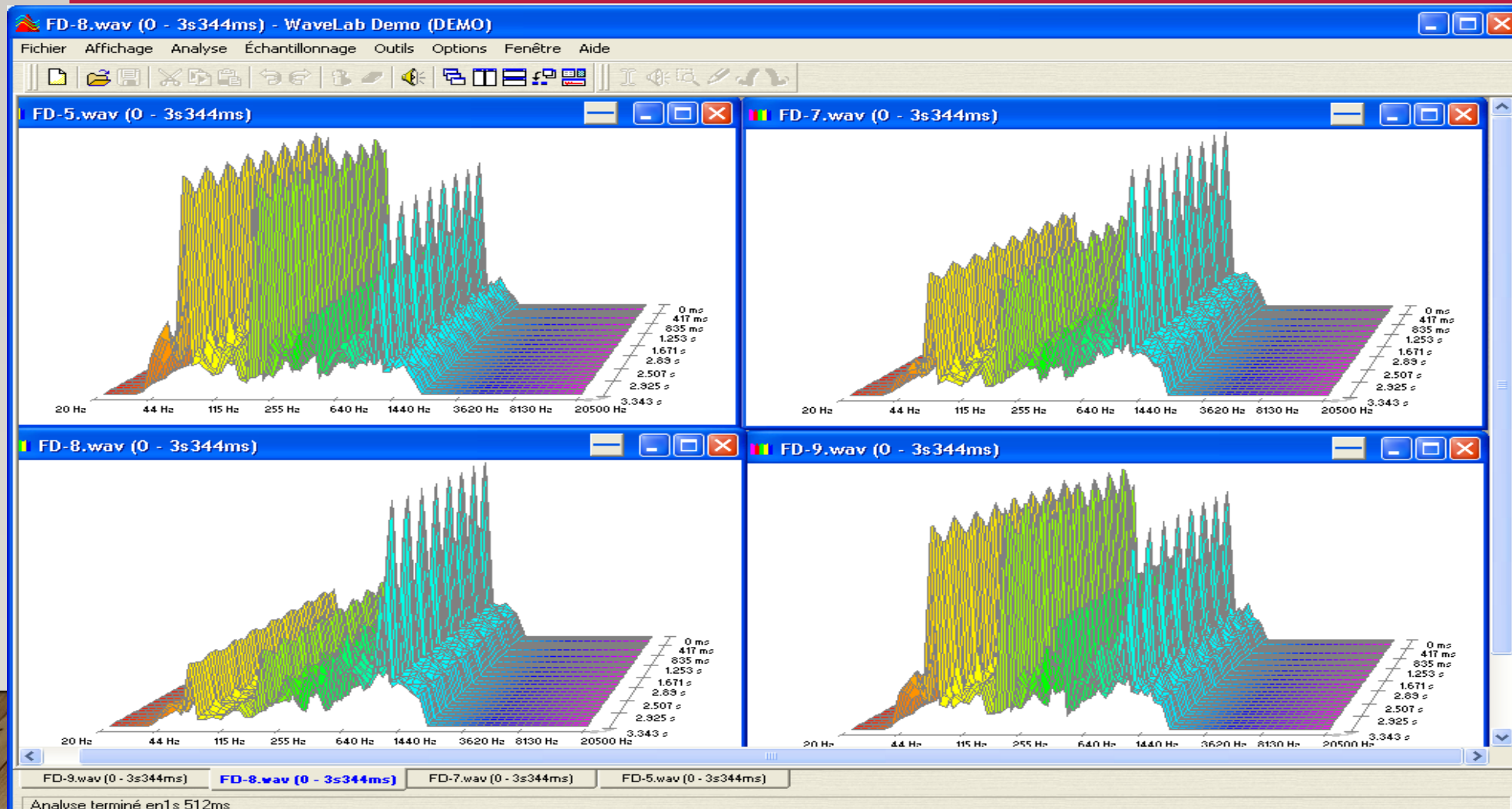
NANO-ELEMENTS FROM PATHOGENIC MICROORGANISMS (2)

- Our current interpretation is that nanostructures existing in the filtrate each contain a piece of genetic information which can eventually reconstitute a whole infectious genome with the help of eukaryotic cells. This led us to explore the nature of such nanostructures and to discover another puzzling phenomenon, which may or may not be related to the first one: it is the generation of electromagnetic waves of low frequency (1000 to 5000 Hertz) by the filtrates of some bacterial species and viruses in appropriate aqueous dilutions. It is in fact a resonance emission subsequent to excitation by very low frequencies coming from the electromagnetic background.
- *Classical pathogenic bacteria such as E. Coli, Staphylococcus, Streptococcus, Clostridium, etc., as well as mycoplasma and viruses like HIV, are sources of the structures emitting the signals.* These signals are approximately all similar, although a more refined analysis may find species-specific differences. The plasmas of individuals chronically infected by the same agents also yield similar signals. The nature and significance for pathogenesis of the molecules involved will be discussed.
-

PLASMA FROM PATIENT WITH ALZHEIMER DISEASE EMS (+) BETWEEN 10^{-6} AND 10^{-11}



THE CASE OF HIV/AIDS (IN COLLABORATION WITH CIRBA, IVORY COAST) AFRICAN PATIENTS, GENERALLY INFECTED WITH THE A/G HIV1 SUBTYPE (IN VITRO : CEM CELLS INFECTED WITH HIV1 LAI)



WHAT HAPPENS IN WATER AND IN MERIDIANS/NADIS IN
RESPONSE TO SIGNALS OF VARIOUS ORIGINS: MUSIC
ELECTROMAGNETIC FIELDS DRUGS, BRAIN SIGNALS, ETC?
THE CASE OF STORM GLASS OF FITZORAY PICCARDI VLADIMIRSKY

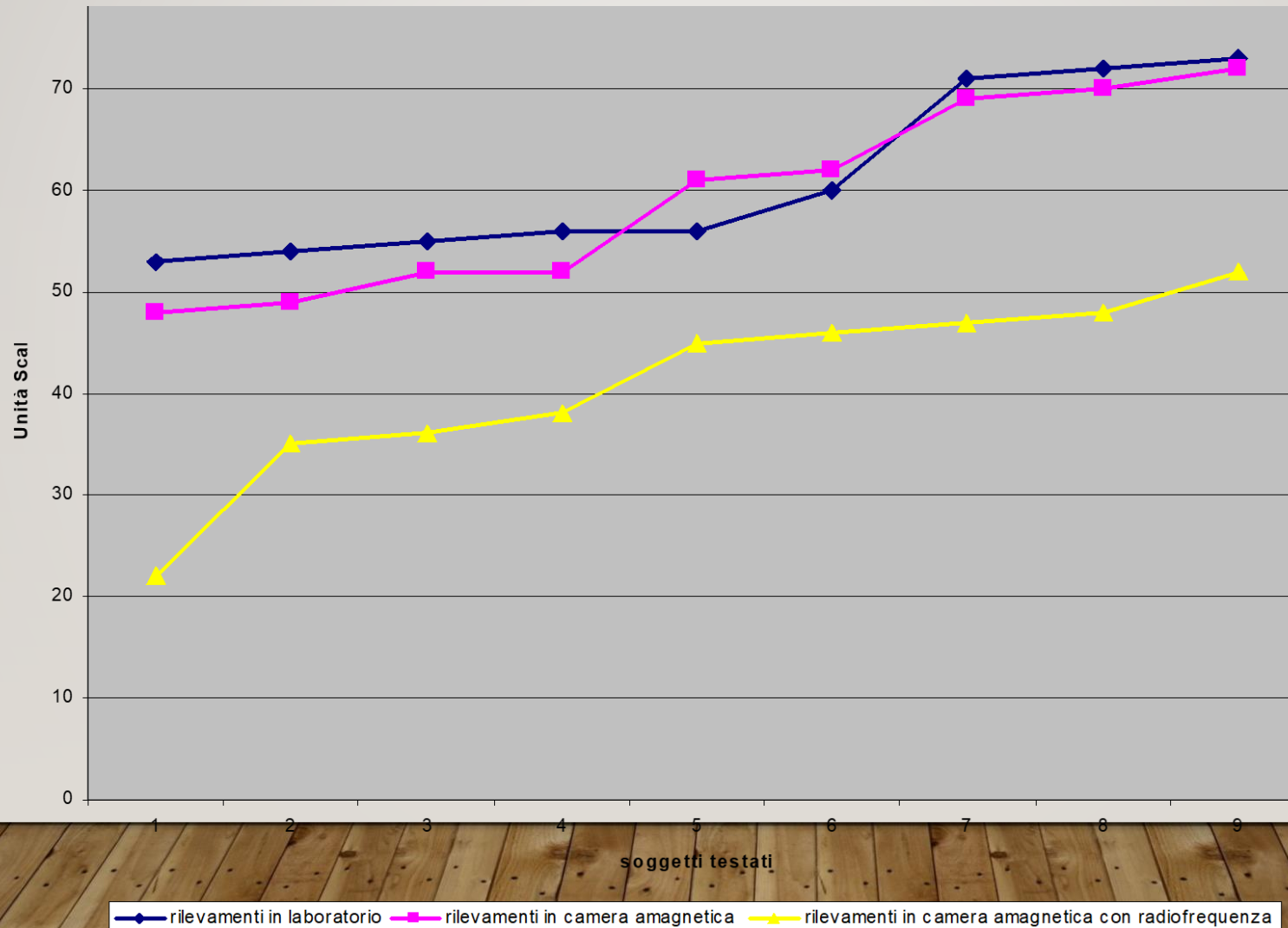


THE ENIGMATIC WATER ACTIVATION FOR CURATIVE USED BY DR DEEP AND OTHERS

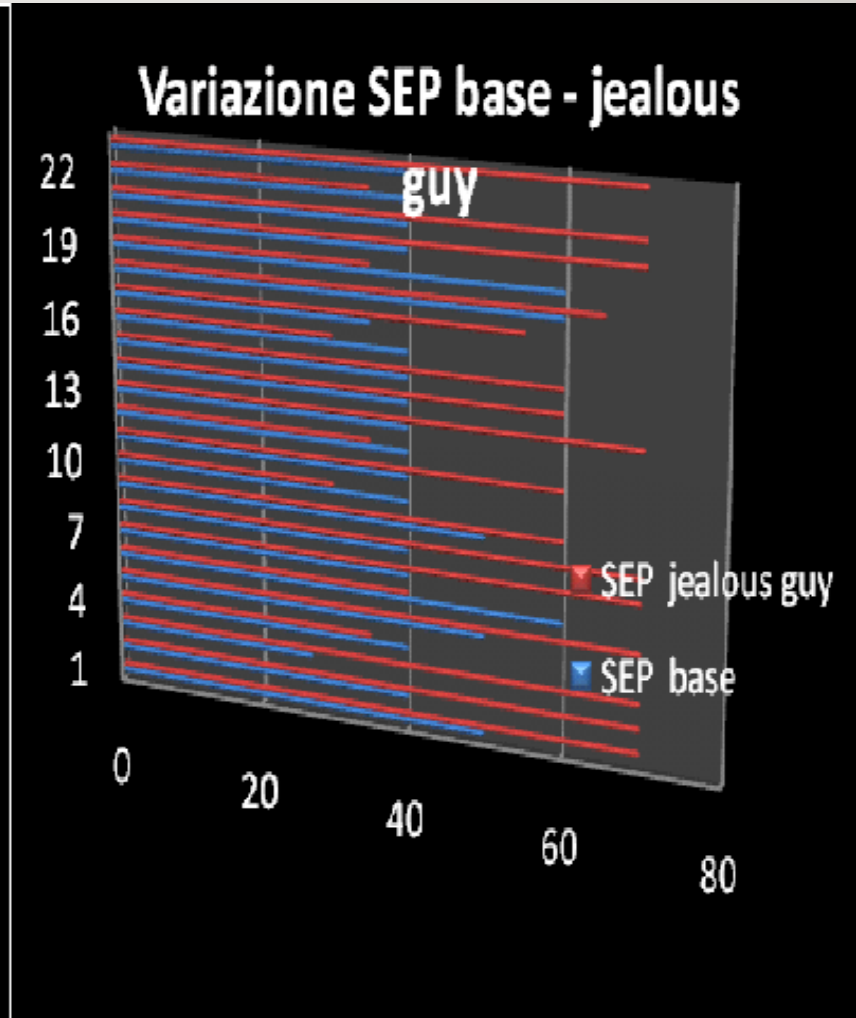
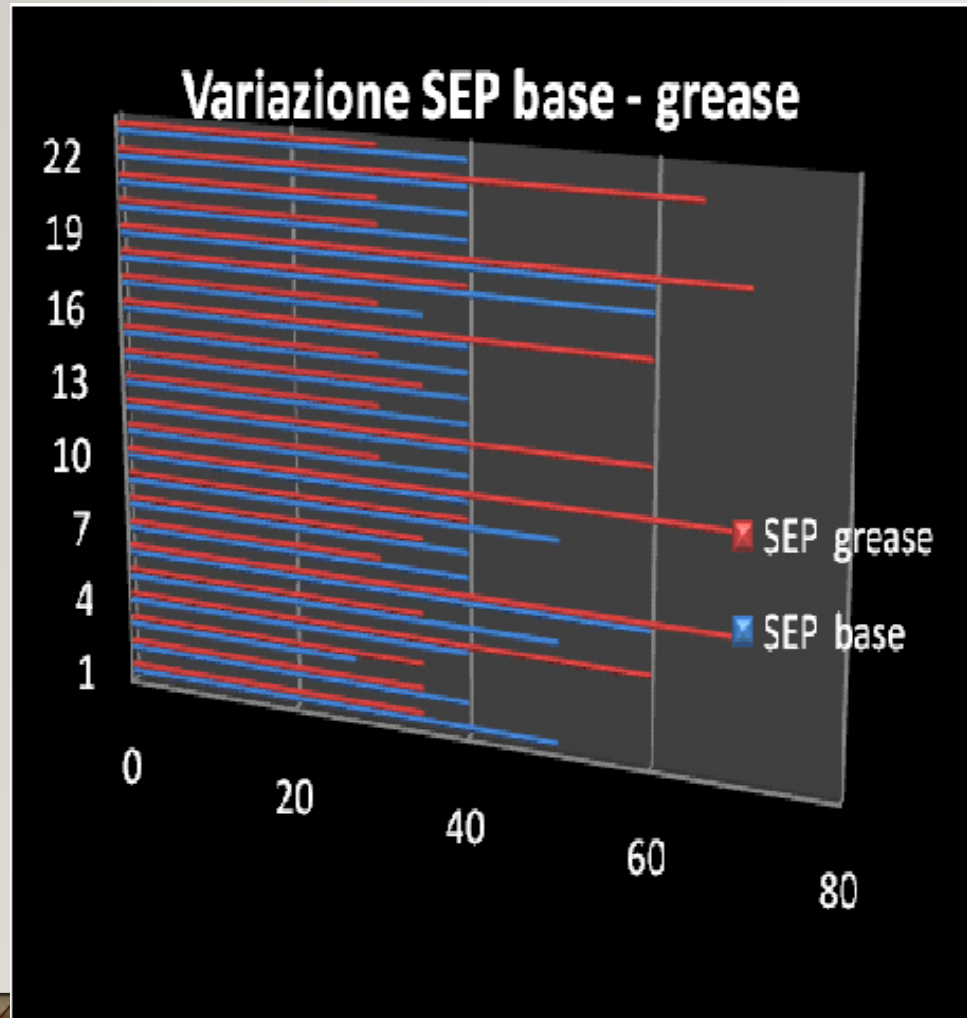
- Dr Deep's work could be important for the development of science and skills in medical practice, increase the efforts to any level to teach the basis of CHAKRA-NADI WATER skill and correlate R&D to share the powerful tradition with the modern science and medicine. Some related matter is offered here in this brief YouTube presentation about my book on Wilhelm Reich: <https://youtu.be/4lun8PyChKY> .
- An NADI WATER CENTRE was build in the MUSEUM OF FUTURE in DUBAI and leading scientist are looking in this enigma and in some complex clinical cases .
- Main part of these effects seems carried on meridian/Nadi seen as bioelectric system as we could see below in answer to many kind of signals strong and low till pure information from drug (all) mediate may be from Potential Vector more o less entangled
<https://journals.aps.org/prl/abstract/10.1103/PhysRevLett.125.040401>

Effects on the conductivity by magnetic field of cell phone antenna 10 V/mt - 900 GHz on seven men exposed in amagnetic room

V.I.Valenzi, S. Grimaldi, G. Quartieri, G. E. Gigante; G. Mileto, G. Monaco: *Osservazioni sulle variazioni bioelettriche nell'uomo indotte da campi elettromagnetici in camera amagnetica*. Ricerca Aerosp. Pag. 33-38, Anno XXI- N. 1. 2005



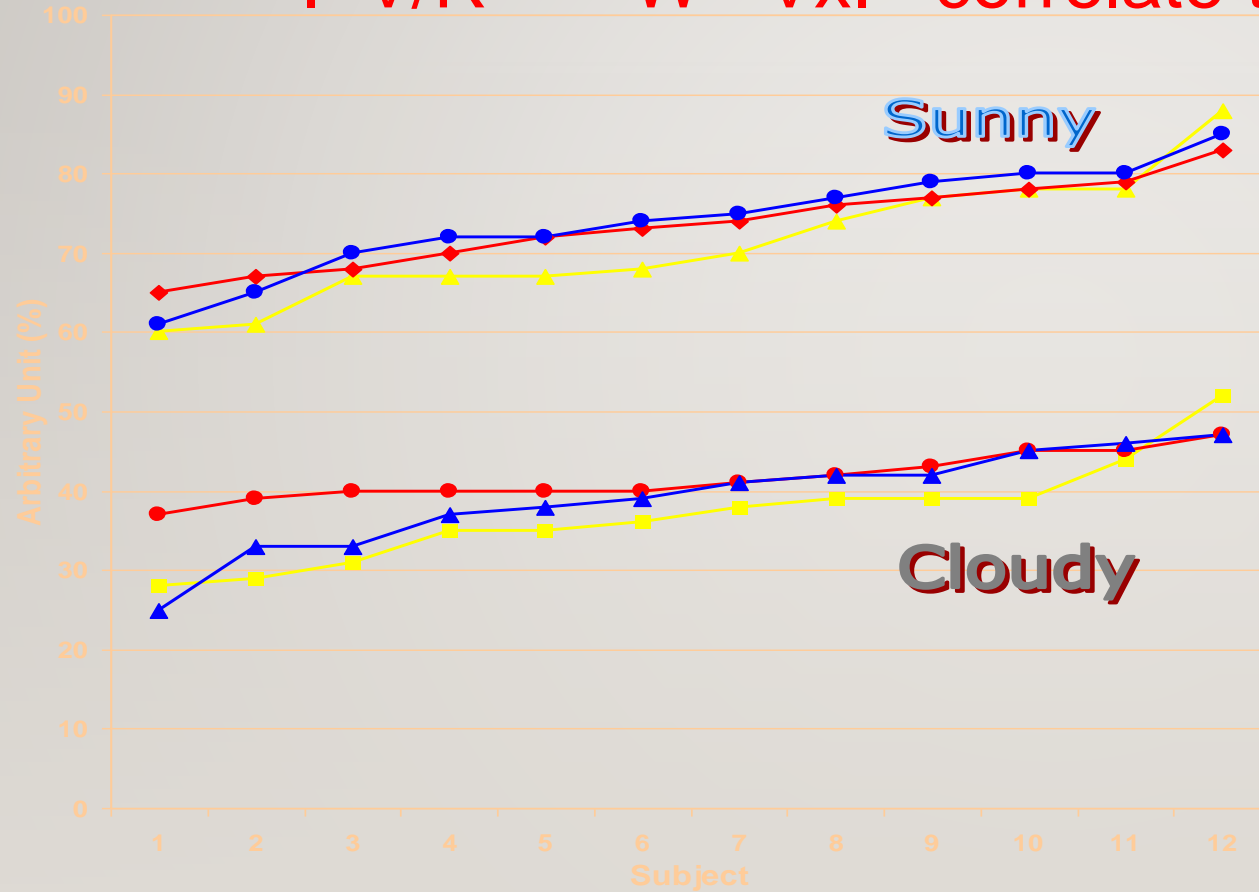
BEATLES AND J. TRAVOLTA SEP EFFECTS



Metheroropatic people in sunny and cloudy day

Bioelectrical measures on chinese meridians

I V/R W VxI correlate to dinamometry



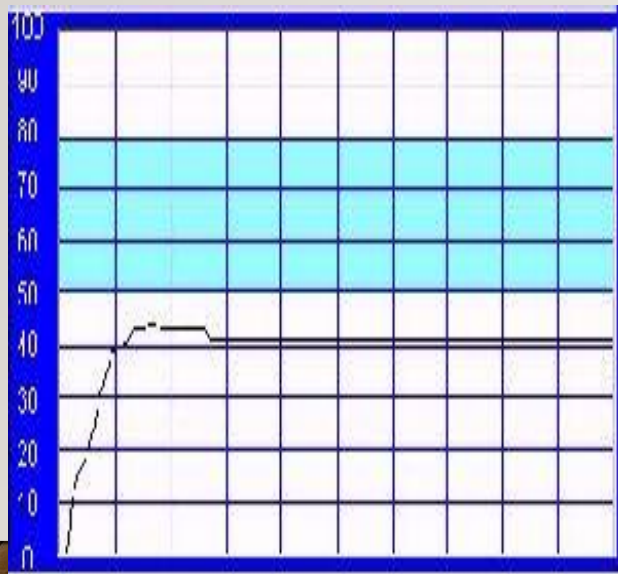
Ohm	V alore US
10 000	91
27 000	78
39000	70.5
47000	66.5
95000	50
100 000	48
130000	43
200000	32
220 000	29
300000	24
500 000	14
1000 000	8

Skin Electric Parameters and molecular signaling of drug
*DRUG EFFICACY AND/OR INTOLERANCE IN METEOROPATHIC
OSTEOARTICULAR DISEASES WITH 8 FANS TESTED*

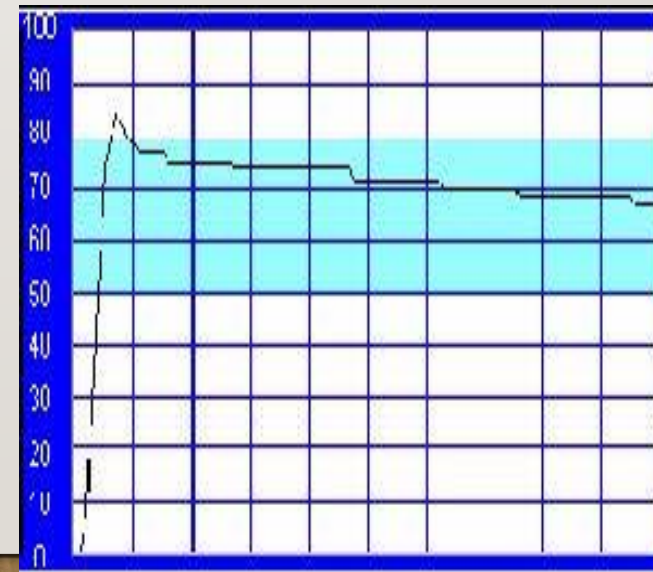
<http://web.tiscali.it/numedi/arc2002/0902/12.html>

V.I. Valenzi and M.L.Roseghini

Without drugs



After Nimesulide 1,5 cm max far from body



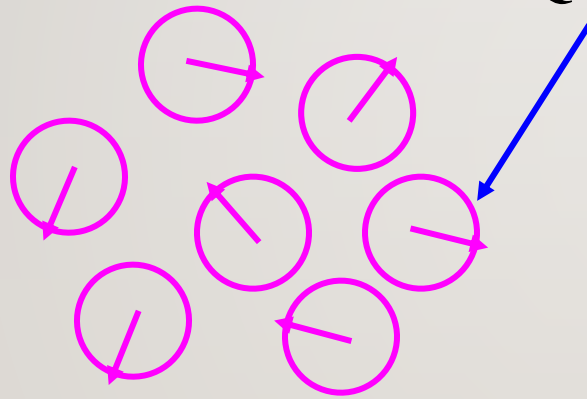
QUANTUM COHERENT INTERACTIONS

LUCA GAMBERALE

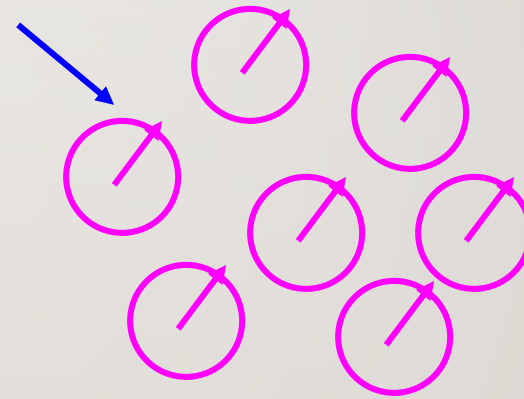
PIRELLI LABS – MATERIALS INNOVATION ADVANCED RESEARCH (MILANO,
ITALY)

N scatters

Quantum phase



Quantum incoherent
Cross section like N



Quantum coherent
Cross section like N²

N ~ 10²³

!!!

POTENTIAL VECTOR

The Potential Vector extends to a nearby large area, without transporting energy but just information, exerting a "fine influence", we could say "informatica", that alters the phase of the present coherent systems.

Giuliano Preparata & Emilio Del Giudice

(Scienza e Conoscenza, 17/2006)



VECTOR POTENTIAL IN PUTHOF'S PATENT

5845220

- *"with advent of quantum theory, however, the traditional picture change. In the prior art literature, the (vector and Scalar potentials A and ϕ) formalism has emerged as more fundamental because it predicts certain quantum interferer effects that have been observed and are not apparent from the (E, B) approach. This difference was first set forth in an unequivocal way in a seminal 1959 paper by Aharonov and Bohm, entitled **Significance of electromagnetic potential in the quantum theory**" Physical Review 1959 and 1961.*
- *In these papers it is shown that in certain two-leg electron-interferometer configuration in which the potential A and ϕ are established in a region of space, but B and E are absent. It is nonetheless possible for the potentials A and ϕ induce changes in electron quantum interference patterns.*
- *That is, electron that are in an electromagnetic field-free region and therefore do not encounter an electric or magnetic field are nonetheless acted upon by the presence of the A and or the ϕ potentials.*

VECTOR POTENTIAL IN PUTHOF'S PATENT(2)

- *Such an effect is now referred to broadly as a Ahnranov- Bohm effect, and device have been built which demonstrate this effect in laboratory. For a recent overview, see, Y Imry and R. A. Webb," Quantum interference and the Ahnranov-Bohm effect" Scientific American" 260 (April 1989).*
- *A second quantum interference effect demonstrate the independent reality of the (A, ϕ) potentials in the absence of the (E, B) fields (and one which is significant for the technology disclosed by Puthof) is a single-leg electron interferometer effect know as the Josephson effect; see R.P. Feynman,. The Feynman Lectures on Physics 1965) The Josephson effect is based on the fact that the current density J through a Josephson Junction (which consist of two superconductors separate by a thin insulator) is determined by the magnitude of the potential A and ϕ , independent of whether E or B are present.*

INFLUENCE OF A VECTOR POTENTIAL ON A HIV REPRODUCTION IN T-LYMPHOCYTES IN VITRO

POKIDYSHEVA L.N., TRUKHAN E.M., TITOVA I.V., MILLER G.G.

• Abstract

- The examination of a field free vector potential (VP) influence on HIV reproduction in a T-lymphocytes in vitro is presented. Two variants of the tissue culture cells, infected by HIV were used: a human peripheral blood Tlymphocytes (PBL) and a human T-lymphoblastoid cell line MT4. The cultures were exposed to a VP during 0,5 and 1,0 hour before or after they were infected by 100 units per cell of a lymphotropic strain of HIV(R5/LAV-1).
- Some effect of a VP on the mentioned above biological systems was revealed. Some distinctions of cell proliferation index (PI) between the PBL and MT4 were found. Slight increase of PI in PBL may be conditioned by wide presentation of signal Toll-2 (IL-1) receptors on the cell surface, which induce the expression of early dividinggenes, whereas they are very rare on the surface of MT4 cell line. However the viral pathogenicity was higher in aMT4 cell line. The phenomena required subsequent evaluation.
- Conference Yalta-Gourzuf 6 june 2008

EXTREMELY LOW FREQUENCY ION CYCLOTRON RESONANCES ON THE SURFACE BOUNDARIES OF COHERENT WATER DOMAINS

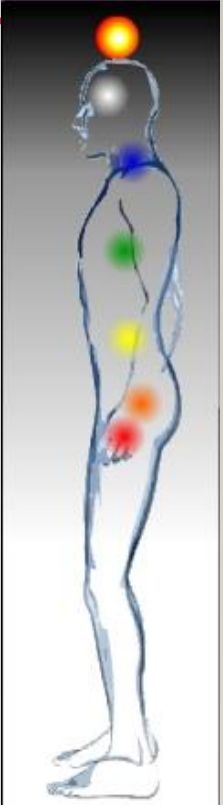
ALLAN WIDOM, JHON SWAIN, V.I. VALENZI

[HTTPS://IOPSCIENCE.IOP.ORG/ARTICLE/10.1088/1755-1315/853/1/012024](https://iopscience.iop.org/article/10.1088/1755-1315/853/1/012024)

- Conclusion This work need more development in fundamental physics, and open to a new understanding of many strange biological phenomena, in particular not linear phenomena that influence, ad example mind brain body connections, effects of transdermic drug, that are without chemical reactions, as also very low dosis of drug, far from concentration in blood in the Benveniste Experiment. Bioelectrical function seems play a key role, not only in heart, with ECG, but also in all internals organs, that seems governed by electrical state of meridians connected, that change their electric parameters in answer to any kind of strong and very low signals as showed in the article and in the review by Scalia Valenzi et coll. <http://ibb.kpi.ua/article/view/140255>

ANCIENT INDIAN MEDICINE AND STRESS

- With a Euro-Indian group we are working in an attempt to find a bridge between THE FREUDIAN UNCONSCIOUS AND THE CHAKRAS INDIANI
<https://it.wikipedia.org/wiki/Chakra>
- The direct experience developed and handed down by great European doctors from Patrick Veret to Umberto Grieco, teaches us that the ancient Indian access keys to the unconscious could be useful in the fight against stress, anxiety, panic attacks, etc.
- We await clarifications from these researches in order to clarify the connections between MIND, BRAIN AND CONSCIOUSNESS on the neuro-physiological level and PINEI, and new techniques to fight psychosomatic diseases and Panic Attacks



SOME CASES SEEMS VERY PROMISING

- <http://www.cimb.me/casi-clinici.html>

https://youtube.com/watch?v=PA6ciR_MQ6o&feature=share



My son, Dhruv, has Down Syndrome, a congenital genetic condition.

After receiving NADI Water I saw a massive change in him. In just seven sessions, we saw physical and cognitive changes in him that I just thought I would never see.

His thick fingers with large joints, became less thick and nodular. This facilitated radically improved fine motor skills. We saw massive improvements in the amount of written work he produced at school and general endurance in such activities.

Dhruv had a mental block when it came to reading and would flat out refuse to do it. This too improved massively, not only did he start reading more at school, but his reading level went up too.

The weakness in his eyes due to Bilateral Esotropia noticeably changed. Dhruv started making more eye contact and his tracking improved. He became more present as a result. His hand eye coordination improved, which his Physical Education teacher also picked up on.

Cognitively, it was difficult to get Dhruv's attention, he found it very hard to focus, this also improved, along with his logical reasoning. He was making more connections having more meaningful exchanges and as a result engaging more with his family and friends.

NADI Water helped to optimise my son's abilities without a shadow of a doubt. I cannot thank Dr Deep enough for all his selfless work. I encourage others to give it a try, you have nothing to lose and everything to gain!


Nisha

02/04/18