

# 28th International scientific and practical conference

"Actual problems of post-traumatic, vascular and neurodegenerative diseases of the nervous and cardiovascular systems",

KIEV November 1-2, 2022

[http://www.cimb.me/files/programm-conference\\_november-1-2\\_Kyiv\\_1-2022.pdf](http://www.cimb.me/files/programm-conference_november-1-2_Kyiv_1-2022.pdf)

## ***SOME CASE REPORT ON INTEGRATIVE PERSONALIZED COHERENT THERAPY OF CRHONIC AND ACUTE PAIN RESISTENT TO THERAPY***

- **Vincenzo Valenzi** (Dip Med. Integr. e Biofisica Federiciana Università Popolare Firenze [vinvalenzi@gmail.com](mailto:vinvalenzi@gmail.com) [www.iiimb.me](http://www.iiimb.me) Mobile & WhatsApp: + 39 331 13 14 801 skipe: vivalenzi
- **Madan Thangavelu** (Transdisciplinary University, Bangalore India, Cavendish Laboratory Univ. of Cambrigde, UK), [madan.thangevelu5@gmail.com](mailto:madan.thangevelu5@gmail.com) Mobile & WhatsApp: + 44 7830 300 728
-

# Topics

- **Mario Tiengo and John Eccles on quantum physics in the neurophysiology of pain**  
[http://www.siaecm.org/dolore/17\\_03\\_10\\_M\\_TIENGO\\_Dolore\\_Percezione\\_del\\_.htm](http://www.siaecm.org/dolore/17_03_10_M_TIENGO_Dolore_Percezione_del_.htm)
- **The Valenzi Preparata Widom Debate on Bioelectrical system SEP and cQED** <http://www.22passi.it/downloads/biorisonanza/qeddefinitivo.pdf>
- **The Chinese Meridian as a Simple BioCircuit Model with Ohm's Law with Weak Interactions and Bohm-Arhanov , Josepshon effects on SEP** <http://ibb.kpi.ua/article/view/140255>
- **A wireless system of Chakra in Mind Brain Body interaction in Widom theory** <https://onlinelibrary.wiley.com/doi/abs/10.1002/qua.22140>
- **From drug intolerances to SEP Driven therapy, the debate Valenzi Montagnier** <https://www.youtube.com/watch?v=CuQtvjBuavI>
- **Some case reports on FED treatment of pain** <http://www.cimb.me/casi-clinici.html>.
- **Remembering the work of Physiologist Vadym Berezovsky**  
<http://www.iimb.me/files/07-cembreum.pdf>
-

# **Extremely Low Frequency Ion Cyclotron Resonances on the Surface Boundaries of Coherent Water Domains**

Allan Widom, Jhon Swain, V.I. Valenzi

<https://iopscience.iop.org/article/10.1088/1755-1315/853/1/012024>

- Conclusion This work need more development in fundamental physics, and open to a new understanding of many strange biological phenomena, in particular not linear phenomena that influence, ad example mind brain body connections, effects of transdermic drug, that are without chemical reactions, as also very low dosis of drug, far from concentration in blood in the Benveniste Experiment. Bioelectrical function seems play a key role, not only in heart, with ECG, but also in all internals organs, that seems governed by electrical state of meridians connected, that change their electric parameters in answer to any kind of strong and very low signals as showed in the article and in the review by Scalia Valenzi et coll. <http://ibb.kpi.ua/article/view/140255>



# Vacuum and Coherence in Nature

Webnar, 25 July 2007

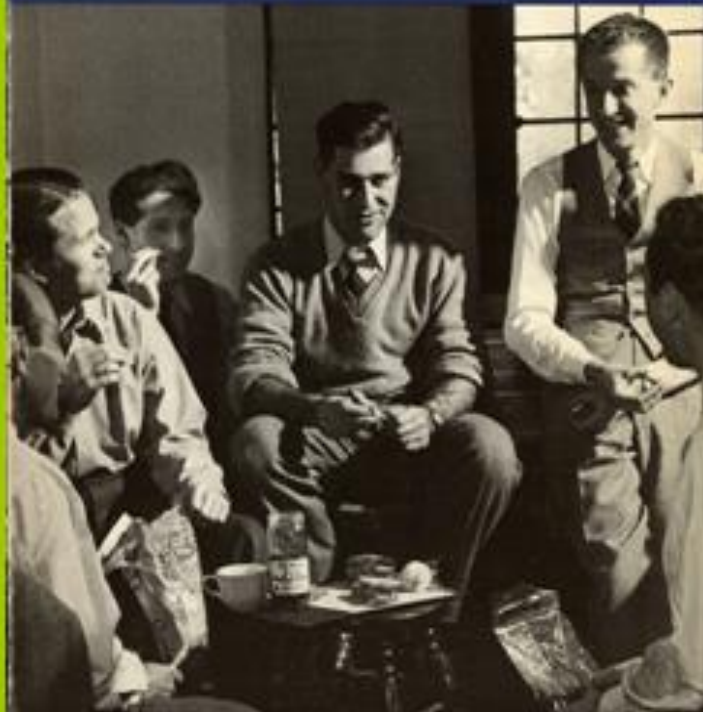
M. TIENGO

*Il dolore:  
dalla materia  
alla mente.*

*L'ipotesi quantistica  
di John Eccles e la  
teoria della  
coerenza di  
Giuliano Preparata*

MIND FROM  
MATTER?

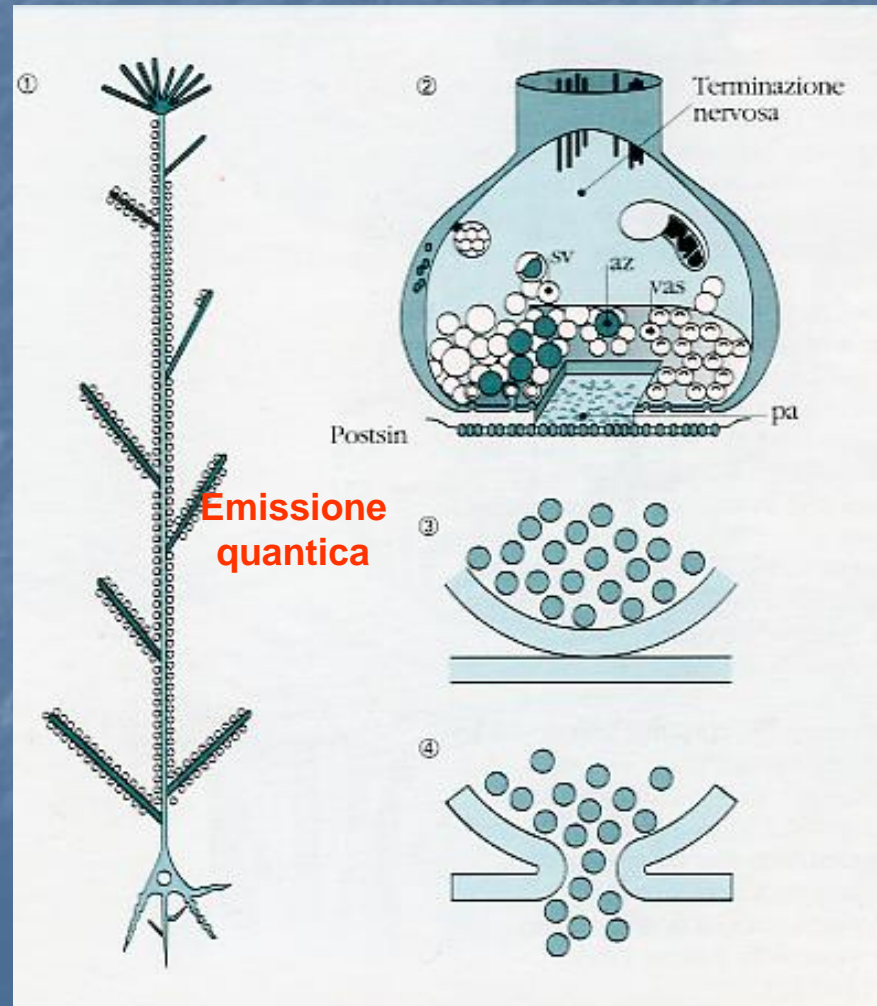
MAX DELBRÜCK





# The psycone coordinates exocitoses by means of quantum probability fields

Sir John Eccles



# From Mario Tiengo Letter in science forum (1)

Emeritus professor State University of Milan Italy

- "In order to obtain this result (that is, for example, to be in good spirits, again, after having experienced melancholy), it is necessary to block the transit of certain nociceptive, or erroneous, impulses in our brain, or to favor others. This means to act principally and specifically on the activity of certain synapses (inevitably, of course, we also will disturb other synapses and networks that are not related at all to our primary objective, and we will provoke so-called collateral side effects). Again, it surprises us, I could even say that it astonishes us, if we think about the fact that a molecule (drug), extraneous to our body, goes to a great degree and in an extraordinarily short amount of time directly to those synapses, and not to others. There must be a recognition code between molecule and receptor, as there is between a key and its lock.

■

# From Mario Tiengo Letter (2)

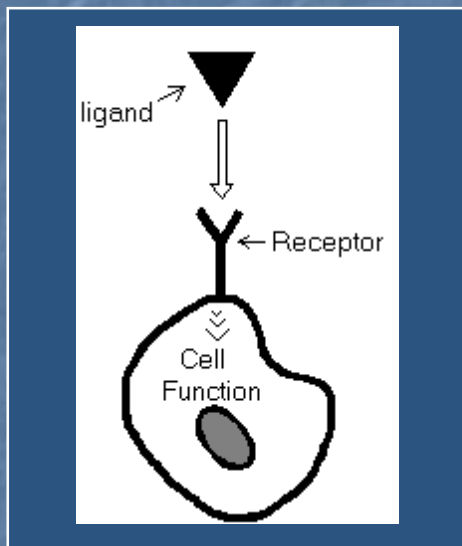
- To students, I cite a metaphor of mine. Let's say that someone gives us a sack containing thousands and thousands of keys for locks in the city, and asks us to find the right locks for the right keys, a desperate undertaking that would require centuries and centuries of work. If, however, he also gave us the possibility to give each key its own recognition code (such as, the street address, the floor and the apartment number), things would be enormously simplified. It's just like this, when we administer a drug, and shortly thereafter we observe the appearance of the desired effect (clinical evidence). To know more about this (and this has been my research for several decades), we must apply the principles and the powerful mathematical models of quantum mechanics, since we enter into the surprising world of the atom and of subatomic particles where, we all know well, the logic of classical physics (Newtonian) are worth little, or nothing."





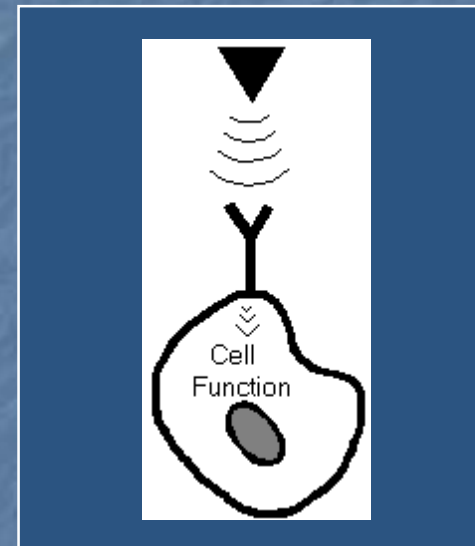
# Molecular signaling

## The Current Theory: "structural matching"



The 3D structure of ligand matches that of the receptor. Physical proximity induces receptor conformational changes which in turn triggers the cascade of events prompting cell function.

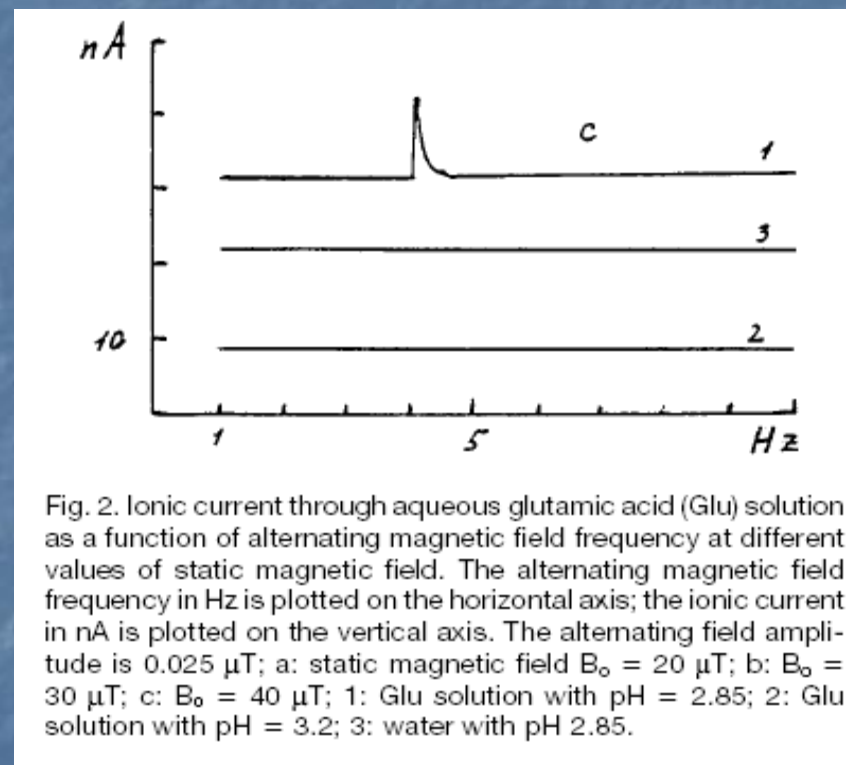
## The Benveniste Theory: "electromagnetic signals"



Proximity favors resonance of ligand-receptor specific EM signals. Resonance serves as an iperconductive mechanism for activation changes which occur at all steps of the cascade inducing cell function.

# Resonance Peak in the Current through the Solution (Zhadin Effect)

ZHADIN M.N., NOVIKOV V.V., BARNESF.S. PERGOLA N.F. (1998) *Combined action of static and alternating magnetic fields on ionic current in aqueous glutamic acid solutions.* Bioelectromagnetics 19: 41-45.



# THE PHYSICS OF LIFE

It is well known from the work of Bohm-Aharonov, Josephson, Putof, Preparata, Trukan, and others, that the electro conductive phenomena could be influenced not only from  $B$  and  $E$  (the electric and magnetic fields) but also from  $A$  (the vector potential). This effect seems play a real role in our understanding of the critical problem of side effects of drug (more than 100000 Americans die every year Lazarou et al. JAMA 1998; 279:1200–1205).



# Nano-elements from pathogenic microorganisms

*by Professor Luc Montagnier, M.D.\**

- There are many ways by which infectious agents can persist in their host, despite an adequate immune response of the latter and the medical use of strong inhibitors of their replication. Retroviruses have evolved to find the best solution in order to persist silent in the host cell by integrating their DNA into the cell DNA. But bacteria have also learned how to stay almost indefinitely in tissues or organs in a resting state, insensitive to antibiotics and poorly exposed to immune reactions. It is also a general property of pathogenic microorganisms to adapt their genome very rapidly to any targeted reaction against them, either endogenous (immune response) or exogenous (treatment). I will describe some new phenomena occurring in bacteria and viruses which may contribute to the chronicity of many diseases and to the difficulties of eradicating their infectious origin.
- The first is what can be best defined as genetic dispersion. When a mycoplasma suspension is filtered through filters of 100 and 20 nM, which are pore sizes much lower than the average size of these micro-organisms (300 nM), the filtrate is apparently sterile when it is cultured in synthetic medium or analysed by DNA PCR and nested DNA PCR. However when the filtrate is incubated with human T lymphocytes (previously checked for lack of infection by the mycoplasma), we detect again the resurgence of the mycoplasma with all its characteristics after 2 or 3 weeks of culture, even when the filtrate is diluted down to 10<sup>-6</sup>.
- \*President of the World Foundation for AIDS Research and Prevention, 1, rue Miollis - 75732 Paris Cedex 15 Tel. : +33 (0)1 45 68 45 45 - Fax : +33 (0)1 42 73 37 45

# Nano-elements from pathogenic microorganisms (2)

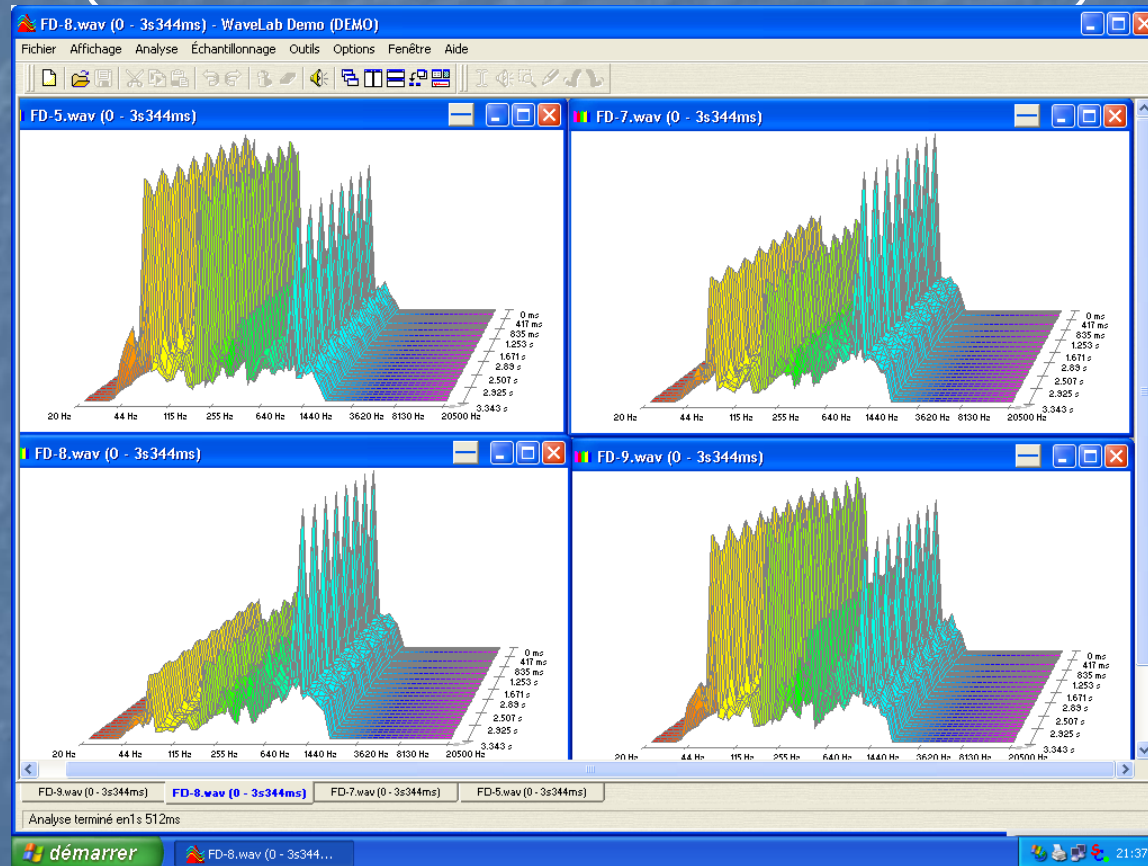
- Our current interpretation is that nanostructures existing in the filtrate each contain a piece of genetic information which can eventually reconstitute a whole infectious genome with the help of eukaryotic cells. This led us to explore the nature of such nanostructures and to discover another puzzling phenomenon, which may or may not be related to the first one: it is the generation of electromagnetic waves of low frequency (1000 to 5000 Hertz) by the filtrates of some bacterial species and viruses in appropriate aqueous dilutions. It is in fact a resonance emission subsequent to excitation by very low frequencies coming from the electromagnetic background.
- *Classical pathogenic bacteria such as E. Coli, Staphylococcus, Streptococcus, Clostridium, etc., as well as mycoplasma and viruses like HIV, are sources of the structures emitting the signals.* These signals are approximately all similar, although a more refined analysis may find species-specific differences. The plasmas of individuals chronically infected by the same agents also yield similar signals. The nature and significance for pathogenesis of the molecules involved will be discussed.
- THIS IS OF GREAT INTEREST FOR LYME DISEASE FROM BORELLIA THAT WE FIND IN MANY PEOPLE IN BRAIN WITH RESONANCE DIAGNOSTICS, CONNECTED WITH SOME BRAIN DISORDER (30/X 2022 VV)



# The case of HIV/AIDS

(in collaboration with CIRBA, Ivory Coast)

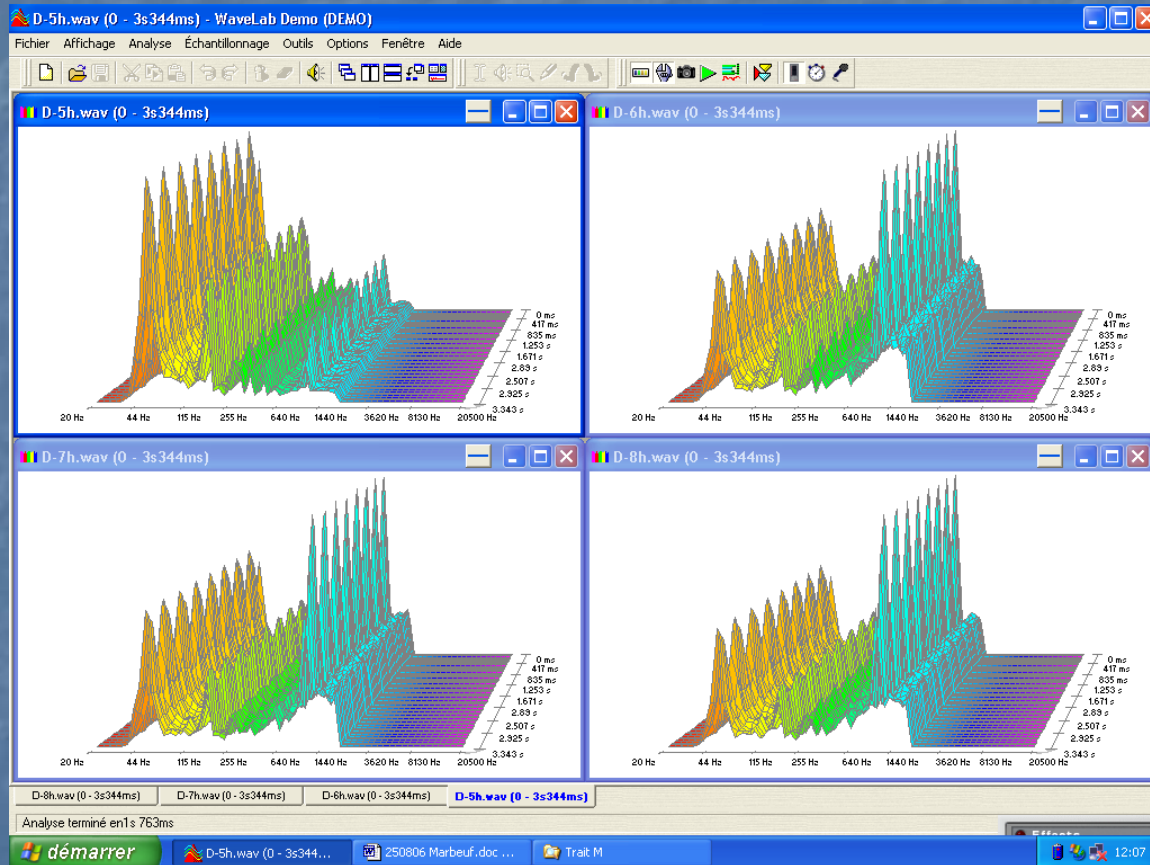
African patients, generally infected with the A/G HIV1 subtype  
(in vitro : CEM cells infected with HIV1 Lai)





# Plasma from patient with Alzheimer Disease

## EMS (+) between 10<sup>-6</sup> and 10<sup>-11</sup>



# ***From Biometeorology a Key for the Comprehension of Bioelectromagnetic Interaction***

**On the role of S.E.P.  
(Skin Electric Parameters)  
in the study of meteoropathies**

# *Centro Studi di Biometeorologia Onlus*

Proceedings of the Meeting "The Role of QED (Quantum Electro Dynamics) in Medicine"

Institute of Pharmacology, University of Rome "La Sapienza", Rome

14/12/1999

## QED & Medicine

Past and future in medicine

Effects of ELF magnetic fields on living matter

Coherent mechanism in interaction of electromagnetic radiation with biological system

What an electromagnetic biology could teach us

Neurobiology and Quantum Electro Dynamics (QED)

coherence of mental state

Coherent system in biology

QED and Medical practice

From drug intolerance to a SEP (Skin Electric Parameters) driven therapy. Some preliminary observation.

Giuliano Preparata

Baldassare Messina

Getullio Talpo

Giovanni E. Gigante

Emilio Del Giudice

Mariano Bizzarri

Giuseppe Sermonti

Umberto Grieco

Vincenzo I. Valenzi

Maria L. Roseghini

Editors: Vincenzo I. Valenzi, Baldassare Messina

Published on Rivista di Biologia/Biology Forum, 93/2000



# From drug intolerance to a SEP (Skin Electric Parameters) driven therapy. Some preliminary observation

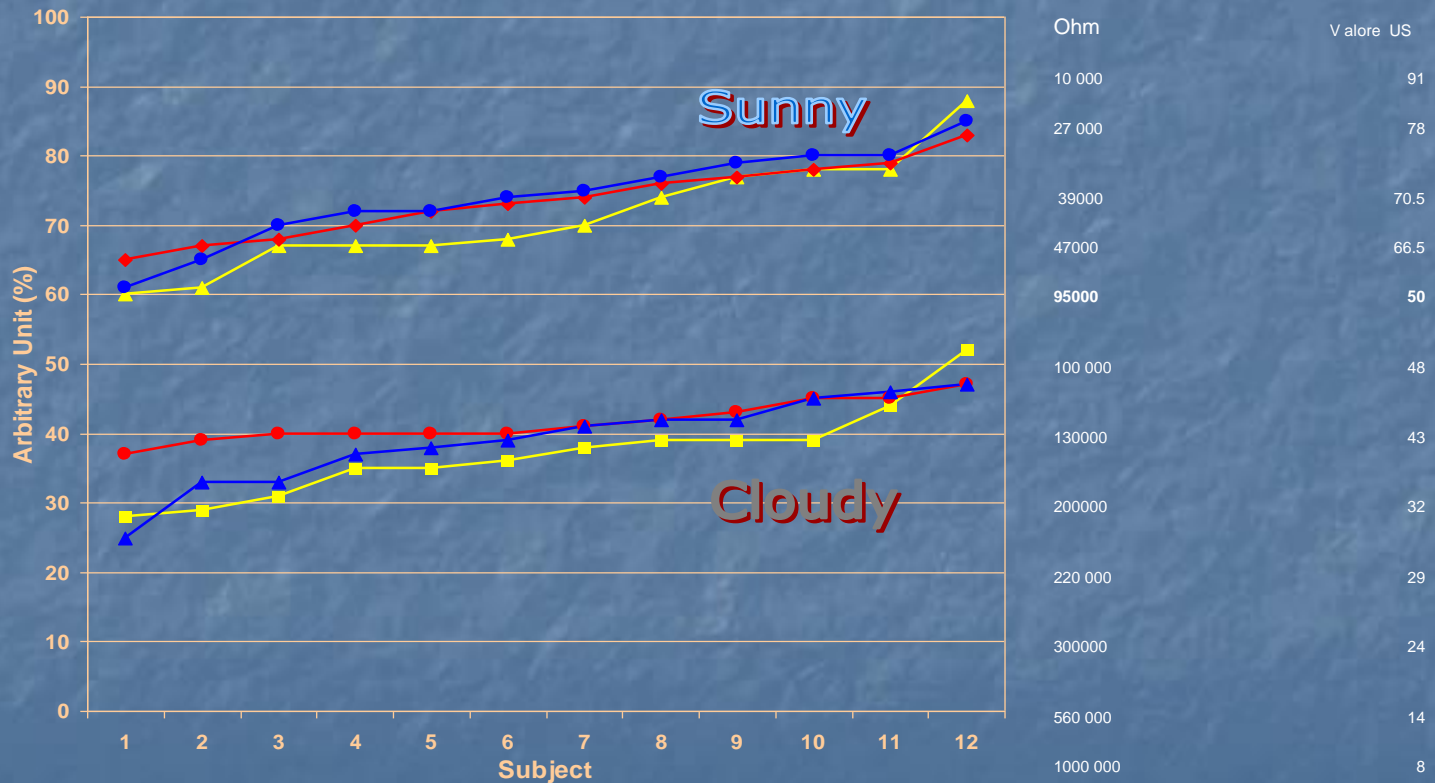
It is possible to improve efficacy of great drug in the therapy of pain, infections, allergy, stress and gastric disorders, hypertension, and many other diseases using or pharmacogenomics or electroquantistic models and technologies applied with dynamometry and skin electric measures, that could improve also the selfmanagement of first level of therapy by people in near and far theatres

<http://www.biophys.ru/archive/congress2012/valenzi.pdf> .

# Metheroropatic people in sunny and cloudy day

## Bioelectrical measures on chinese meridians

### I V/R W VxI correlate to dinamometry



# What are the Skin Electric Parameters (SEPs) or BAP?

They are electrical measurement made, with a ohmmeter, on the skin Chinese **meridians, studied as circuit a variable resistance**, in answer to physical signals measurable (Meteorological, magnetic and electric fields, drug, etc) and not measurable (vector potential, etc.).

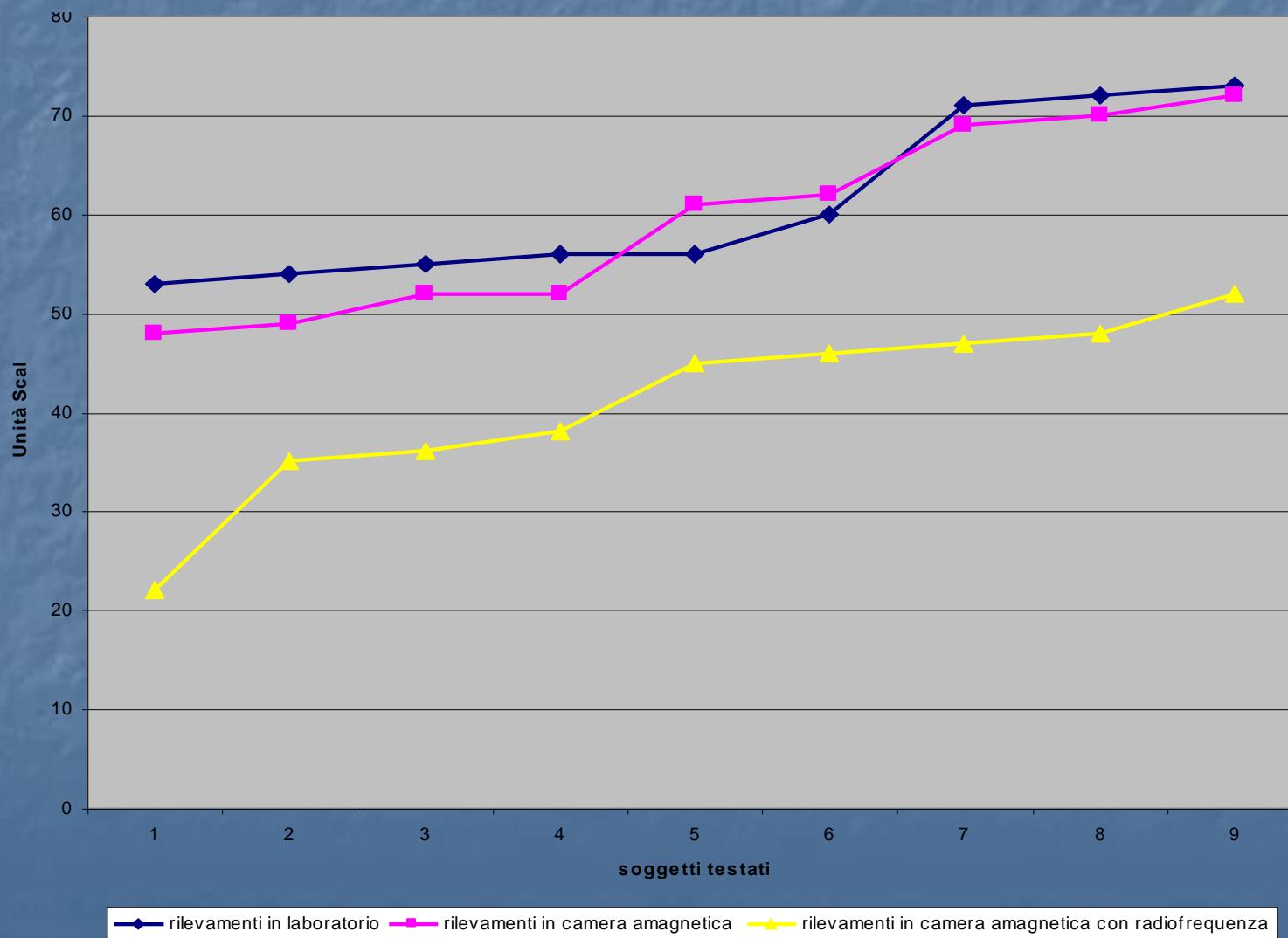


# The Ohm Law in Therapy and Biology

- Measures highlighted in subjects with meteoropathies and various pathologies, that the electrical resistance increased in physical electric circuits with a medium of about 43 scale unites of SEP corresponding to 130,000  $\Omega$ .
- After the administration of a coherent therapy, we saw a resistance fall in medium at 39,000  $\Omega$  (70 us), with an improvement of bioelectric performance due to an increase of physical electric currents, in accordance with Ohm's law,  $I = V/R$
- Power in the biological system vary with  $W = V \times I$ , with functional correlations (performance status, immunological status, muscle power, pain, inflammation, allergy, dyspnea, etc.)

# Effects on the conductivity by magnetic field of cell phone antenna 10 V/mt - 900 GHz on seven men exposed in amagnetic room

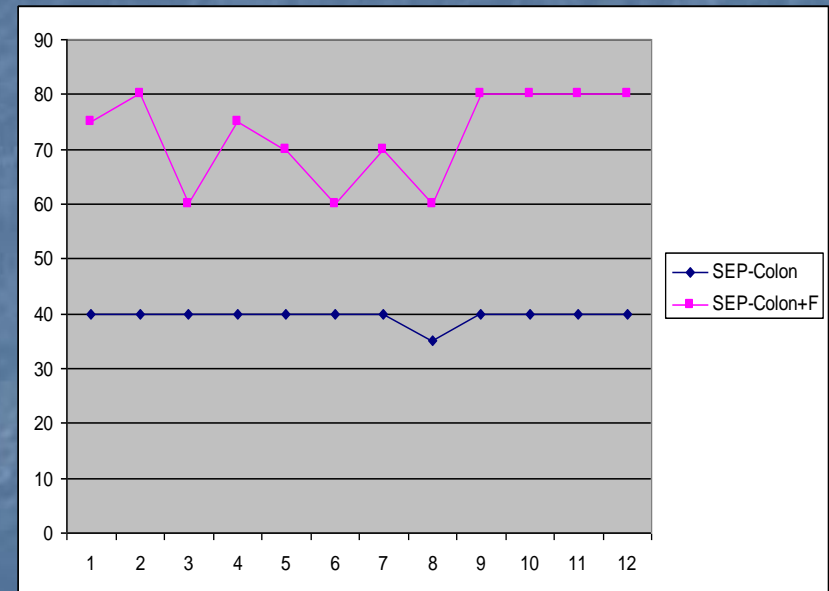
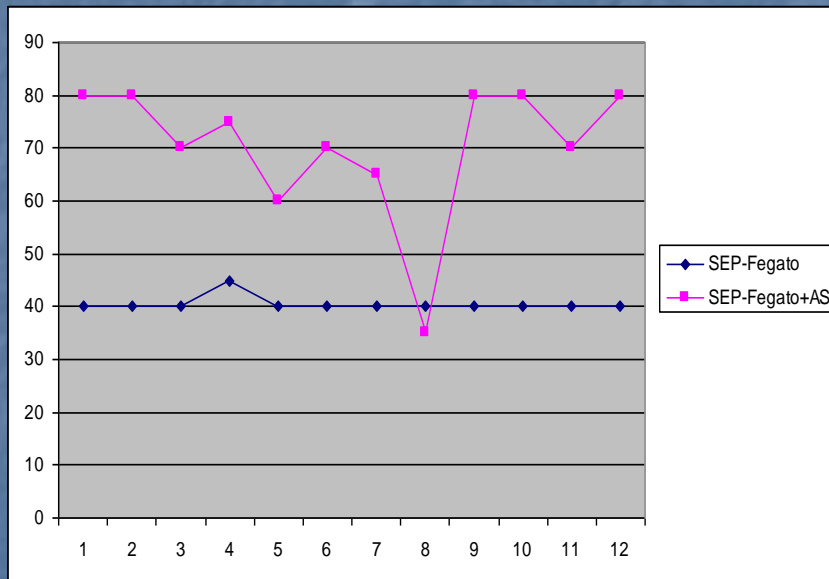
V.I.Valenzi, S. Grimaldi, G. Quartieri, G. E. Gigante; G. Mileto, G. Monaco: *Osservazioni sulle variazioni bioelettriche nell'uomo indotte da campi elettromagnetici in camera amagnetica*. Ricerca Aerosp. Pag. 33-38, Anno XXI- N. 1. 2005



# SEP variations on subjects with chronic constipation in hydropinic treatment

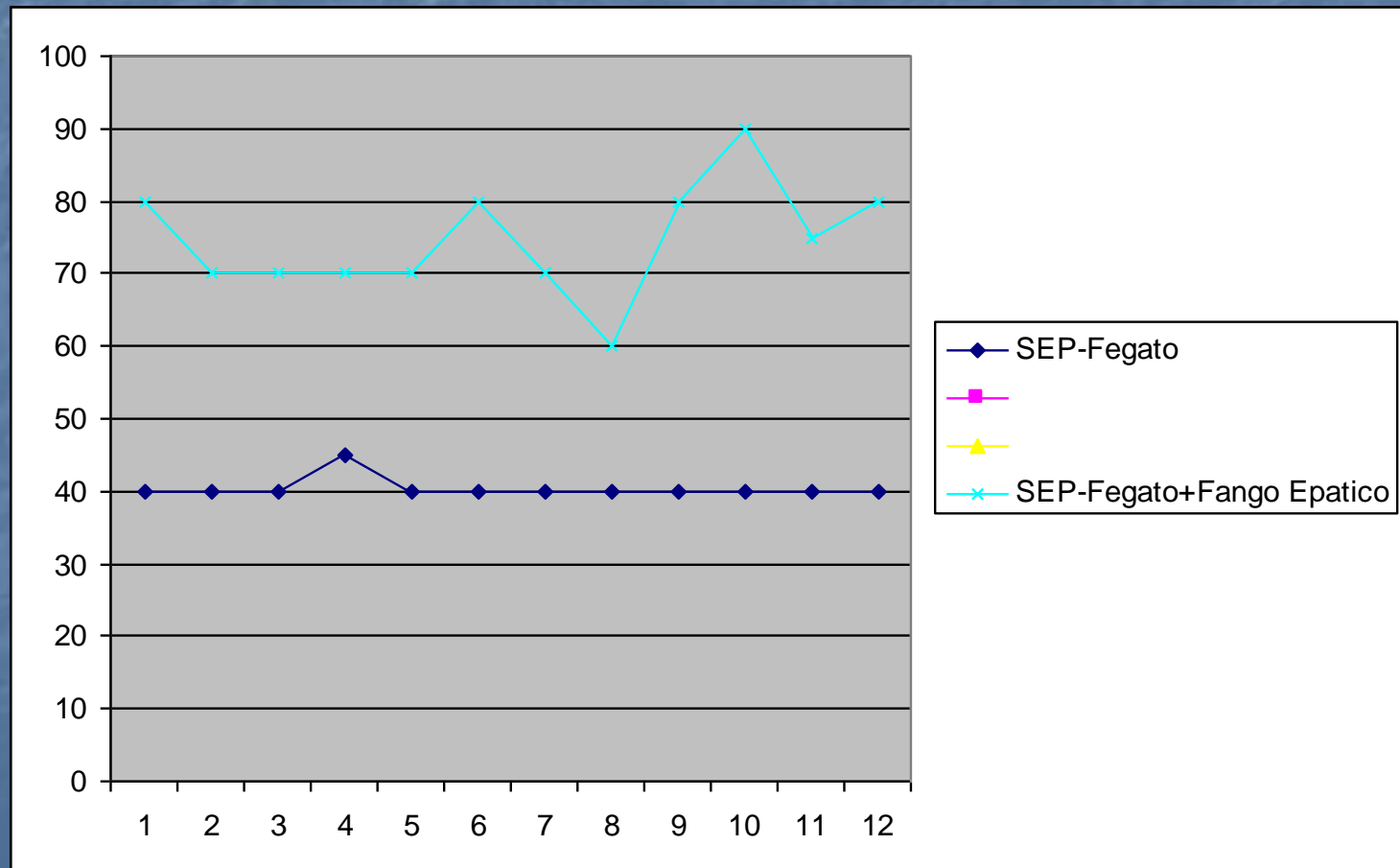
A. Pisani, V.I. Valenzi, M.C. Lucchetta, M. Grassi, A. Serio, P. Avino, M.V. Russo, A. Fraioli

VII International Conference "Cosmos and Biosphere", 1-6 October 2007, Sudak, Crimea

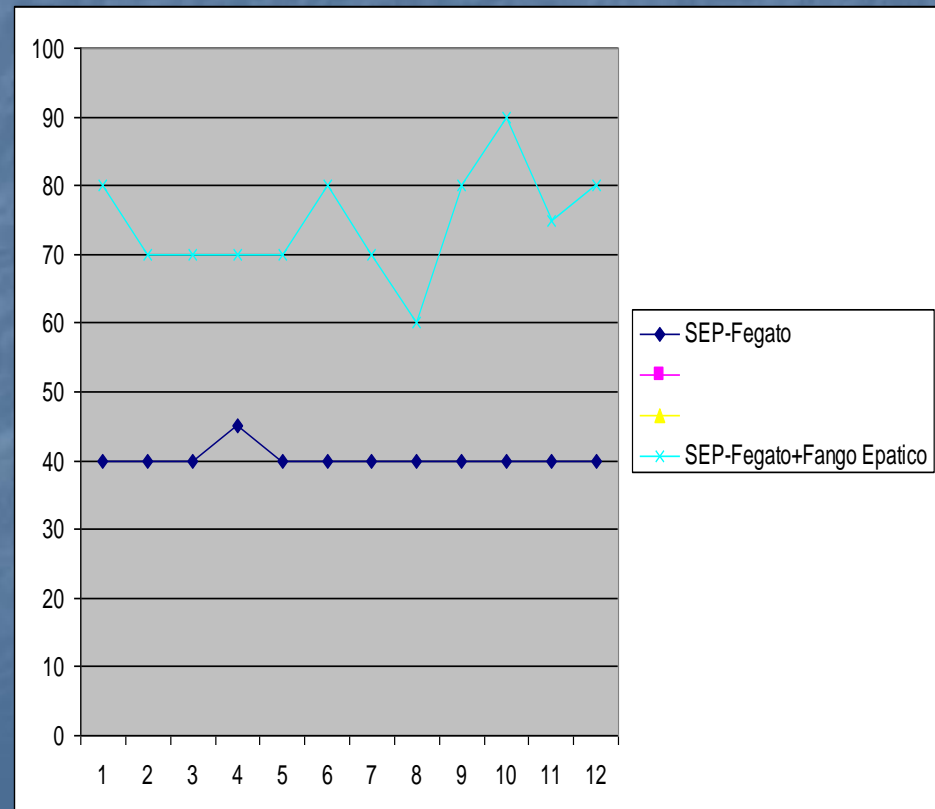
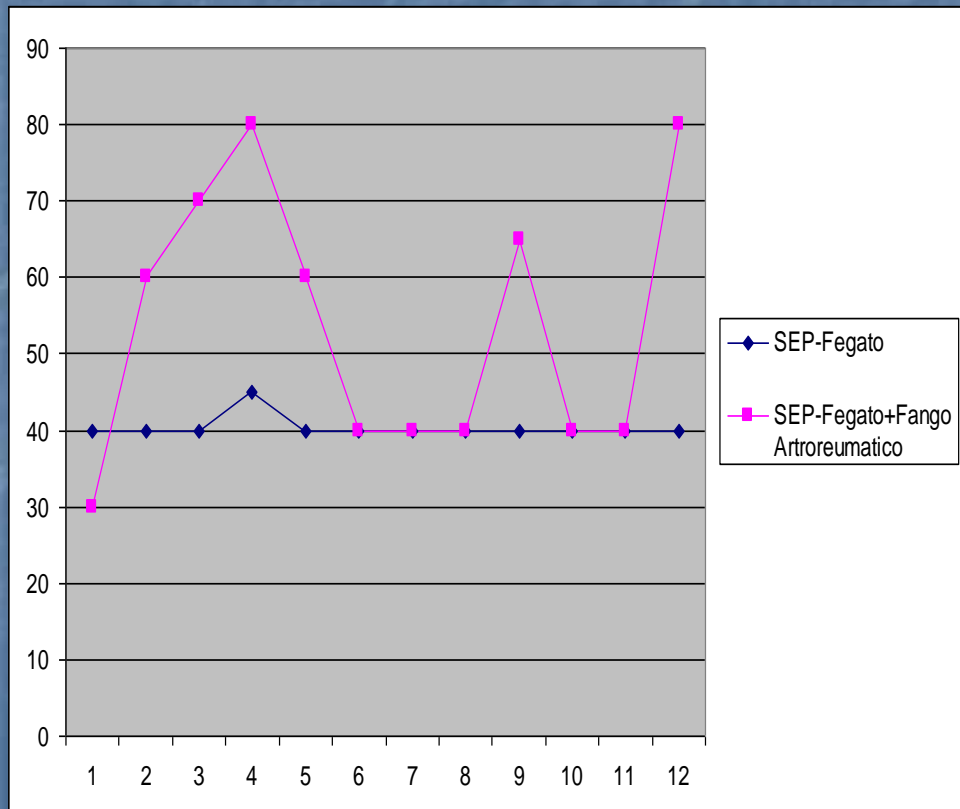




# Spa therapy effects on SEP



# Mud therapy and rheumatic meteoropathic pain: muds are not all the same!



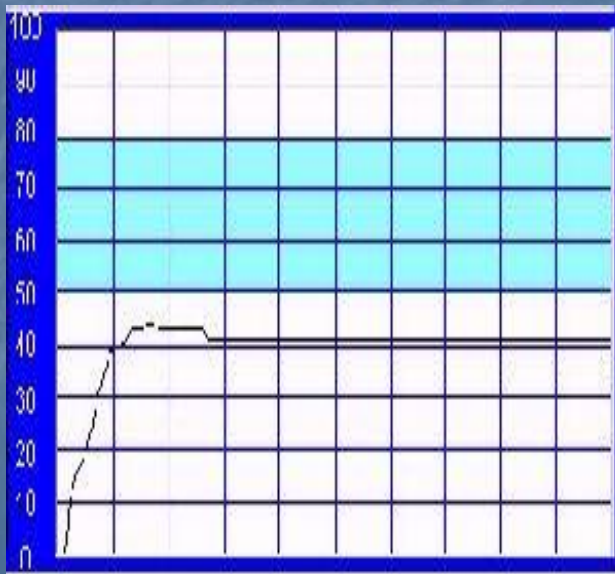
## Skin Electric Parameters

### *DRUG EFFICACY AND/OR INTOLERANCE IN METEOROPATHIC OSTEOARTICULAR DISEASES WITH 8 FANS TESTED*

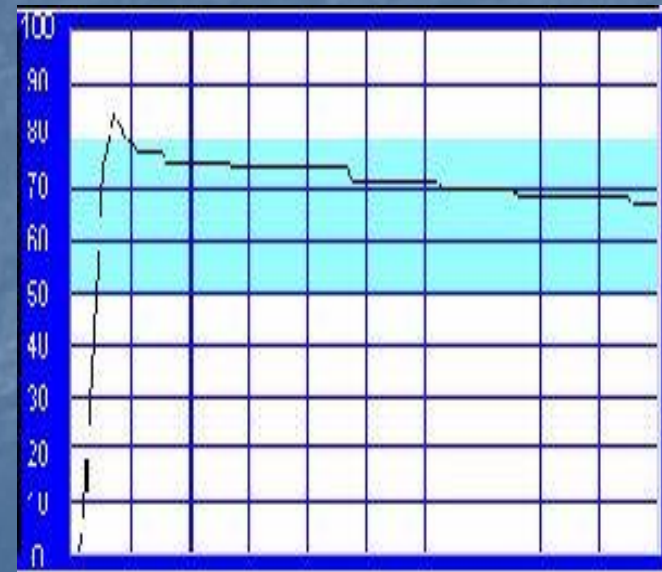
<http://web.tiscali.it/numedi/arc2002/0902/12.html>

V.I. Valenzi and M.L. Roseghini

**Without drugs**



**After Nimesulide 1,5 cm max far from body**





# RESEARCH AND DEVELOPMENT IN PHARMACOELECTRODYNAMICS

- This practical development must will be tested in controlled clinical trials, but also in theoretical and experimental pharmacological clinics of researches and in biophysical theoretical development, using the fundamental basis posed 15 years ago in a research on 500 soldiers in GDF in Rome  
<http://www.22passi.it/downloads/biorisonanza/qeddefinitivo.pdf> .
- In this pharmacoelectrodynamics model we can see how electrical phenomena are operative not only at the level of a single cell but also in all human body on top of the nervous and muscular system, with not only ecg or eeg or emg but with with other electric devices and by the Ohm's Law applications to life.

# The concept of “drug receptor” and the <<magic bullet>>

- Paul Ehrlich (1845-1915) deserves the merit of having the insight that the effect of drugs could be understood against as the consequence of their chemical interaction with the tissue. Then he stood against the “vitalistic” approach, still deeply rooted in the early years of the century; the basic tenet of “vitalism” was that the effectiveness and specificity of drug could not arise from the laws of physics and chemistry, but would require the active presence of some supposed “vital forces”, Ehrlich (3), on the contrary, stressed that, to be effective, the molecular components of a drug should “bind” to some specific component of the cell. He defined accordingly the receptors as “the active group of molecule of the protoplasm where it is possible to bind a corresponding chemical group of a molecule not belonging to the protoplasm>> . To better explain this concept he proposed the suggestive definition of a <<magic bullet>> able to hit its specific target (the “receptor”) in the crowd of chemical components of the living organism.



# From drug intolerance to SEPs (Skin Electric Parameters) driven therapy. Some preliminary observation

*by Vincenzo I. Valenzi and Maria Luisa Roseghini*

Rivista di Biologia/Biology Forum 93/ 2000

## Drug intolerance

■ However the "magic bullet" is not always able to get the target. Frequently, in spite of the ceaseless progresses of pharmacology, adverse and intolerance against the drugs may occur and produce situations where a careful evaluation of the risk/benefit ratio of the use of the drug is mandatory. A fraction as the 70/75% of the disease induced by drugs cannot admit any explanation in terms of the usual immunological reactions, although those symptoms were induced by drugs which were well known allergens. In these cases the disease has been christened as "pseudo-allergy" or drug intolerance. The drugs which elicit largest pseudo-allergic response are the antiinflammation non steroid ones, some antibiotics, the local anaesthetics etc.

■ The most frequent symptoms are quite similar to exhibited by "real" allergic reactions, but less intense and acute. In the "real" allergies the typical diagnostic probes are the skin reactions, the nose and mouth stimulation tests, the measurement of the specific IgE (Rast), the "in vitro" lymphocitary blastization and others.



# An electromagnetic (e.m.) mechanism could underlie these strange pseudo-allergies

- In the last four years, Dr Umberto Grieco (see his contribution to this meeting) has made us familiar with the experiences of the Voll Electroacupuncture, that have achieved surprising successes in the diagnosis of the food and drug intolerance. After many exchanges with Umberto and a number of tests at the Centre of Immuno-allergology led by prof. Franco Filiaci, we were convinced that a controlled investigation was useful with the aim of checking these surprising phenomena.
- In a nutshell, the appearance of electric voltage on the skin suggested that an electromagnetic (e.m.) mechanism could underlie these strange pseudo-allergies; since these symptoms were the effects of drug, the intriguing possibility arose that the molecules of drugs could extrinsecate an e.m. action apart from the universally accepted chemical action.

# This equipment measures the electric conductance in the body along paths which coincide with the meridians as recognised by Chinese acupuncture

- In order to probe this possibility, in the 1998-99 many discussions occurred in the Rome medical research community, which have included , among other, Dr Paolo Cascino, Prof. Baldassare Messina, Prof. Maria Luisa Roseghini, prof. Franco Filiaci and prof. Vincenzo Martinelli. The practical outcome of these debates has been the start-up in April '99 of a wide-range research program, run by the Surgeon Department of the University of Rome "La Sapienza", on a population of patients provided by Italian Treasury Police (Guardia di Finanza).
- The object of the research is the systematic measurement of the skin electric parameters and the search for correlation's with the existence of food and drug intolerance.
- **In the first experiments an EAV-Voll Electric acupuncture equipment has been used. This equipment measures the electric conductance in the body along paths which coincide with the meridians as recognised by Chinese acupuncture .**
- Notice that the present understanding of the skin electrophysiological effects does not yet allow a satisfactory modelling of the phenomenon and , furthermore, the instrumentations, which is produced mainly in Germany, is not yet so reliable to guarantee a complete reproducibility of the tests. It is thus mandatory to correlate the EAV data with the usual clinical and diagnostic results.



# Outlook of the research on SEPs driven therapy

The pilot study program has involved so far more than 250 volunteers and the crossing of the EAV and clinical evidence has opened a new horizon to the drug therapies.

The preliminary results, to be checked further with double blind tests, show a dramatic improvement of the risk/benefit ratio by the avoidance of the drugs which exhibit lowering of these adverse reactions by a skilful use of the EAV techniques.

# Theoretical problems

The main problems for deciphering the physic dynamics play ***between chemical drugs and the body electric conductance***.

We have observed how drug and food introduction in biological system, can increase or decrease the coherence of the system measured with the SEPs.

Analogous to what occurs in super conductive materials (see volume "From quark to crystals" of Giuliano Preparata) an increase of coherence is associated to phenomenon of high conductance.

It is in this way that we observe that an efficient (coherent) drug produces, in the electrical circuit of the human body, an increase of conductance of approximately 30÷70%, correlated to an increase of energetic power provable with "chinesiological" tests and impressionable clinical improvements.

This was the rationale of Meeting on the possible role of Quantum ElectroDynamics (QED) in Medicine. We invited Giuliano Preparata and Emilio Del Giudice in order they helped us to understand by the QED mechanism, how drugs could show an action at-a-distance, which should underlie the body electric phenomena and open new ways to the drug electrodynamics.



# From drug intolerance to a SEP (Skin Electric Parameters) driven therapy. Some preliminary observation

by Vincenzo I. Valenzi and Maria Luisa Roseghini

Rivista di Biologia/Biology Forum 93/ 2000

## An project of research that try "little heroes"

1. In the last study *in preparation of double blind trial*, we have observed in twenty allergic patients, that the association of an antihistaminic drug (loratidine, mizolastine, cetirizine, etc.) whit a cortisone drug (betametasone, mometasone, deflazacort), driven from the SEP, gives an 90/% of regression of the symptoms allergic (rhinitis, etc.).
2. These results are obtained from patients **without intake of drug**, but using drug for electrodynamics action, with application of drug external to the body.
3. The development of intolerance to drugs seems strongly correlated to the fall of the conductance in the body.
4. *The substitution of drugs with the improvements of conductance, is correlate to immediate regression of intolerance and allergic symptoms.*

# BAP or SEP Driven Therapy

## Traditional approach to therapy

Drugs, electromagnetic fields (High and Low), thermal therapy are active in electric circuits in humans and we can improve our ability to analyze environment influences, physiopathology state and driven therapy.

### ■ Controversial approach to:

- Very extremely low signal ( as in Benveniste experiment).
- farmaco electrodynamics observations-
- Morell's test of drug .

**For this controversial approach we need of more complex theoretical basis, that could be found via the BOHM AHRANOV effects in resistive networks in the field of quantum theory?**



May be

# POTENTIAL VECTOR

*The Potential Vector extends to a nearby large area, without transporting energy but just information, exerting a "fine influence", we could say "informatica", that alters the phase of the present coherent systems.*

*Giuliano Preparata & Emilio Del Giudice  
(Scienza e Conoscenza, 17/2006)*



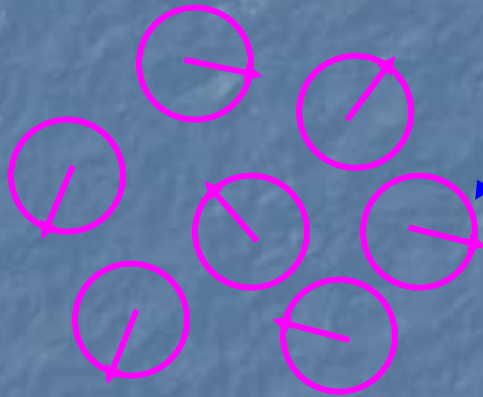
# Quantum Coherent Interactions

*Luca Gamberale*

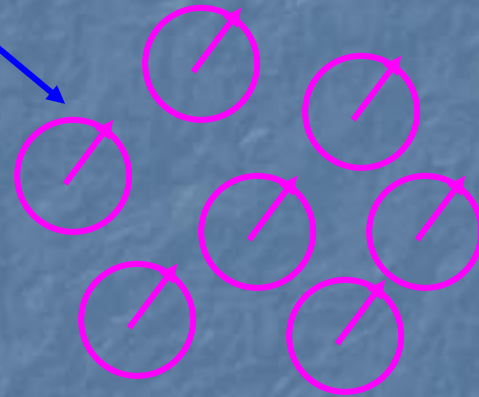
*Pirelli Labs – Materials Innovation Advanced Research  
(Milano, Italy)*

N scatters

Quantum phase



Quantum incoherent  
Cross section like N



Quantum coherent  
Cross section like  $N^2$

$N \sim 10^{23}$

!!!



# Vector Potential in Puthof's Patent 5845220

- *"with advent of quantum theory, however, the traditional picture change. In the prior art literature, the (vector and Scalar potentials  $A$  and  $\phi$ ) formalism has emerged as more fundamental because it predicts certain quantum interferer effects that have been observed and are not apparent from the  $(E, B)$  approach. This difference was first set forth in an unequivocal way in a seminal 1959 paper by Ahranov and Bohm, entitled **Significance of electromagnetic potential in the quantum theory**" Physical Review 1959 and 1961.*
- *In these papers it is shown that in certain two-leg electron-interferometer configuration in which the potential  $A$  and  $\phi$  are established in a region of space, but  $B$  and  $E$  are absent. It is nonetheless possible for the potentials  $A$  and  $\phi$  induce changes in electron quantum interference patterns.*
- *That is, electron that are in an electromagnetic field-free region and therefore do not encounter an electric or magnetic field are nonetheless acted upon by the presence of the  $A$  and or the  $\phi$  potentials.*

# Vector Potential in Puthof's Patent(2)

- *Such an effect is now referred to broadly as a Ahfranov- Bohm effect, and device have been built which demonstrate this effect in laboratory. For a recent overview, see, Y Imry and R. A. Webb, "Quantum interference and the Ahfranov-Bohm effect" Scientific American" 260 (April 1989).*
- *A second quantum interference effect demonstrate the independent reality of the  $(A, \phi)$  potentials in the absence of the  $(E, B)$  fields (and one which is significant for the technology disclosed by Puthof) is a single-leg electron interferometer effect know as the Josephson effect; see R.P. Feynman,. The Feynman Lectures on Physics 1965) The Josephson effect is based on the fact that the current density  $J$  through a Josephson Junction ( which consist of two superconductors separate by a thin insulator) is determined by the magnitude of the potential  $A$  and  $\phi$ , independent of whether  $E$  or  $B$  are present.*



# INFLUENCE OF A VECTOR POTENTIAL ON A HIV REPRODUCTION IN T-LYMPHOCYTES IN VITRO

Pokidysheva L.N., Trukhan E.M., Titova I.V., Miller G.G.

## Abstract

- The examination of a field free vector potential (VP) influence on HIV reproduction in a T-lymphocytes in vitro is presented. Two variants of the tissue culture cells, infected by HIV were used: a human peripheral blood Tlymphocytes (PBL) and a human T-lymphoblastoid cell line MT4. The cultures were exposed to a VP during 0,5 and 1,0 hour before or after they were infected by 100 units per cell of a lymphotropic strain of HIV(R5/LAV-1).
- Some effect of a VP on the mentioned above biological systems was revealed. Some distinctions of cell proliferation index (PI) between the PBL and MT4 were found. Slight increase of PI in PBL may be conditioned by wide presentation of signal Toll-2 (IL-1) receptors on the cell surface, which induce the expression of early dividinggenes, whereas they are very rare on the surface of MT4 cell line. However the viral pathogenicity was higher in aMT4 cell line. The phenomena required subsequent evaluation.
- Conference Yalta-Gourzuf 6 june 2008

# Conclusion 1

From Maxwell to Bohm-Arhanov, from Josephson to Puthof and Benveniste-Preparata, many scientists have developed works, published on Physical Review, won Nobel Prizes, and developed patents and new technologies.

It is time to develop a large controlled study to give scientists, medical doctors, governments, patients, a new opportunity for diagnostic and driven pharmacotherapy for improving the ratio of risk/benefits and costs/benefits. BAP or SEP way.



## CONCLUSION 2

It open a new way towards pharmacoelectrodynamics for a tailor made or coherent therapy with drug, nutraceuticals, spa, etc. that could improve the risk/benefit ratio in medical treatments and power of drug against diseases.

# Conclusion

Over the last fifty years, R. Voll showed that human body could be seen as an electrical system with the electric circuitry in the Chinese meridians scheme, not based on a qualitative Yin Yang law, but following a quantitative Ohm's Law and that coherent and incoherent quantum interactions rule on the bioelectrical status (connected with performance status and physiopatological processes).

In a nutshell, the appearance of electric voltage on the skin suggested that an electromagnetic (e.m.) and a quantum mechanism could underlie the so call pseudo-allergies to drug: since these symptoms were the effects of drug, the intriguing possibility arises that the molecules of drugs could involve a quantum and e.m. action apart from the well know chemical action

# Conclusion (3)

***It seems that* we have, together nervous system, a new (or very old..... the Indo-Chinese meridian) Sensitive Bioelectrical System that answer to the Ohm's Law and quantum interaction?**

**Thanks for your attention and your contribution!**

**We will discuss on this again 18 November in the incontri sula scienza di Colle val d'Elsa**

**<https://www.iiimb.me/files/01-COHERENCE-22-JB---18-NOVEMBER--3-.pdf>**